

MV-CH290-60GM/GC 29MP, 36mm×24mm CCD, GigE Camera

GigE
VISION



The Hikvision MV-CH290-60GM/GC 29 MP 36mm×24mm CCD GigE Camera is a high quality device that can be used in a variety of applications, including SMT automatic optical detection, PCB AOI, FPD detection, railway related applications and etc.

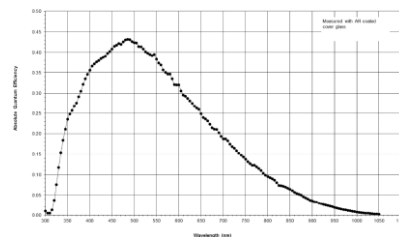
Key Features

- 29 MP resolution, pixel size of 5.5μm
- High quality CCD sensor with ultra-high signal-to-noise ratio, wide dynamic range, excellent imaging quality
- 128 MB on-board buffer, which enable to cache multiple pictures for data transmission or image retransmitting in Burst mode
- GigE interface, with the maximum transmission distance of 100 m (without relay)
- Compact construction design with mounting holes on the up and bottom panels for flexible mounting

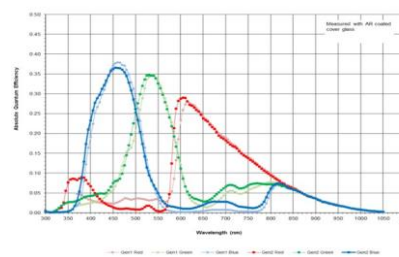
Application Scenarios

- SMT automatic optical detection
- PCB AOI
- FPD detection
- Railway related applications

Spectral Response



MV-CH290-60GM Quantum Efficiency



MV-CH290-60GC Quantum Efficiency

Order Model

M58 Mount without fan, Mono: MV-CH290-60GM-M58S-NN
M58 Mount with fan, Mono: MV-CH290-60GM-M58S-NF
F Mount with fan, Mono: MV-CH290-60GM-F-NF
M58 Mount without fan, Color: MV-CH290-60GC-M58S-NN
M58 Mount with fan, Color: MV-CH290-60GC-M58S-NF
F Mount with fan, Color: MV-CH290-60GC-F-NF



Specifications

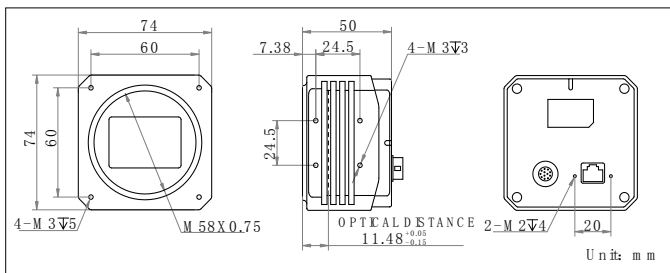
Model	MV-CH290-60GM	MV-CH290-60GC
Parameters	29MP, 36mm×24mm CCD, GigE Camera	
Camera		
Sensor	KAI29050	
Resolution	6576×4384	
Pixel Size	5.5μm×5.5μm	
Sensor Size	36mm×24mm	
Frame Rate	4fps	
Dynamic Range	>64dB	
SNR	>40dB	
Gain Range	0-20dB	
Exposure Time	110μs-1sec	
Shutter Mode	Global Shutter. Auto-Exposure, Manual Exposure, One-key Exposure	
Data Interface	Gigabit Ethernet	
General Purpose I/O	12 pin IO, Opto-isolated input x1, Opto-isolated output x1, Bi-directional non-isolated I/O x1, RS232 x1, full-duplex RS485 x1	
Image Buffer	128MB	
Data Format	Mono 8/10/10p/12/12p	Mono 8/10/12 Bayer RG 8/10/10p/12/12p YUV 422 Packed YUV422_YUYV_Packed RGB 8
General		
Power	< 12W@12VDC, using 12VDC @2A switching power or power adapter	
Temperature	Working Temperature 0~50°C, Storage Temperature -30~70°C	
Humidity	20%-80%RH without condensation	
Dimension	M58 Mount without fan: 74mm×74mm×50mm M58 Mount with fan: 74mm×74mm×78mm F Mount with fan: 74mm×74mm×113mm	
Weight	M58 Mount without fan: <410g M58 Mount with fan: <450g F Mount with fan: <600g	
Lens Interface	M58*0.75: Optical back focal length 11.48 mm F Mount: Optical back focal length 46.5 mm	
Software	MVS or Third-Party Software supporting GigE Vision Protocol	
Operating System	Windows XP/7/10 32/64bits	
Compliance	GigE Vision	
Certification	CE, FCC, RoHS	

Recommended Accessories

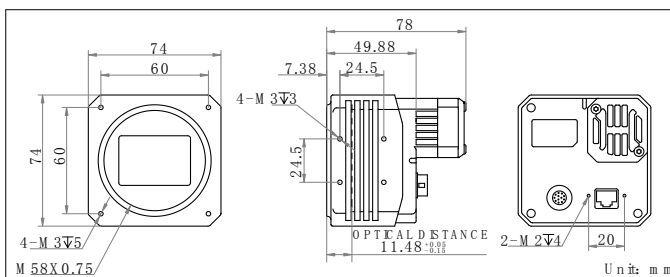
- **Power:** 12VDC @2A switching power or power adapter
- **NIC:** Intel Pro1000 or above version recommended
- **Network Cable:** CAT5e or CAT6 network cable recommended

Dimensions

M58 Mount without fan:



M58 Mount with fan:



F Mount with fan:

