

PRECISION MACHINE VISION LENS



VT4Z1450MXJP

1inch 14-50mm
6MP IR-Corrected

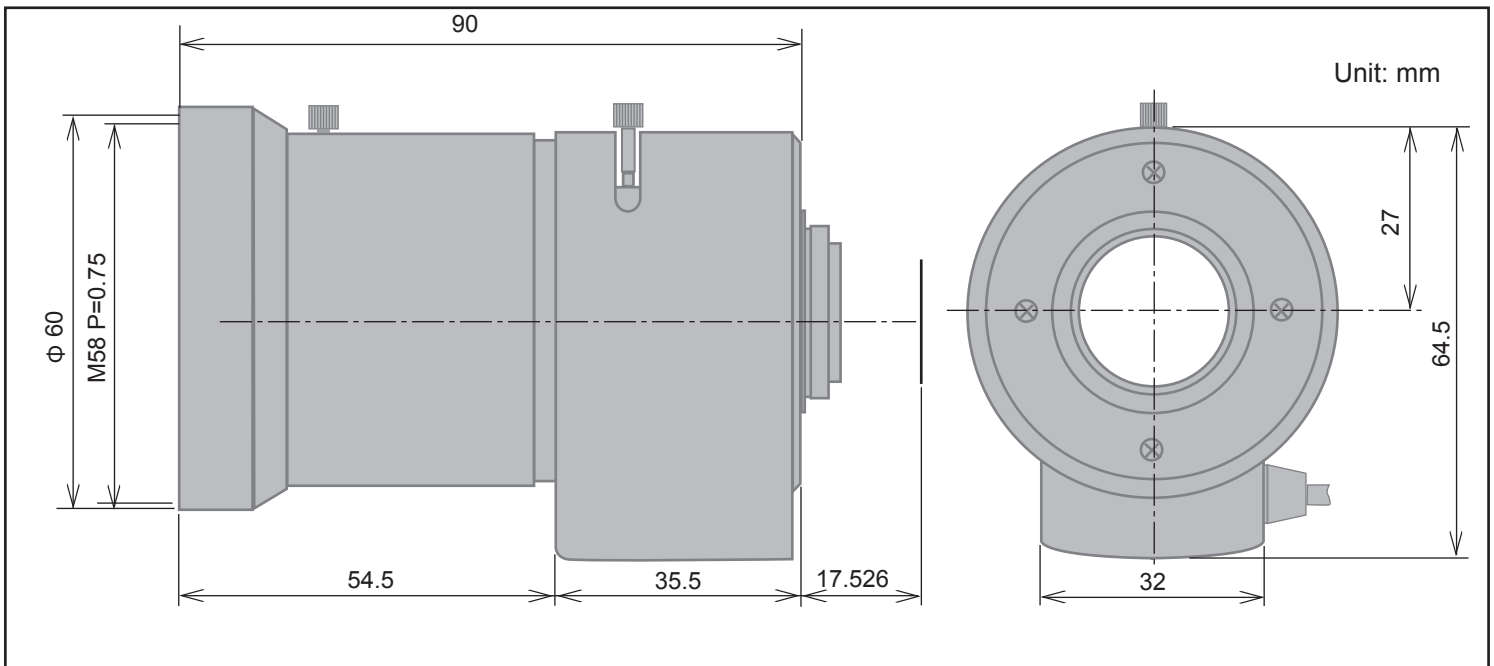


Image Format	1-inch
Focal Length	14-50 mm
Relative Aperture	F=1:2.6
Iris Range	2.6 to 16
Angular Field of View	f14mm: 50.5° x 38.0° f50mm: 14.5° x 11.1°
Resolution	6MP(Center:130lp/mm, Corner: 111lp/mm)
M.O.D.(Minimum Object Distance)	1.2m
Back Focal Length	13.995mm
Flange Back	17.526mm
Operation	Focus: Manual with lock screw Zoom: Manual with lock screw Iris: P-Iris
Lens Mount	C-mount
Filter Screw	M58 P=0.75
Dimensions	$\Phi 60.0 \times 90.0$ mm (max.)
Weight	395g
Operating Temperature	-10 to +50°C

PRECISION MACHINE VISION LENS



VT4Z1450MXJP

1inch 14-50mm
6MP IR-Corrected

P-iris specifications

Motor type	PM type stepping motor
Excitation method	2 phase bipolar drive
Number of steps	80
Operating voltage	DC3 to 5V
Coil resistance	33 Ω
Application time	Within 30sec.
Holding voltage	0.5V
Pull-out rate	20 to 1,000 pps
Operating temperature	-10 to +50°

Pin No.	Cable color	Phase	Close >> << Open Step			
			0	1	2	3
1	Yellow	A	H	L	L	H
2	Brown	\bar{A}	L	H	H	L
3	Red	B	H	H	L	L
4	Orange	\bar{B}	L	L	H	H

