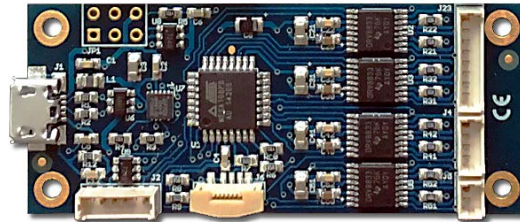


## MCR600 lens motor control board

- ✓ Designed to control several Theia motorized lenses.
- ✓ Controls **P-iris, focus and zoom motors, and IR cut** motor
- ✓ Reads photo interrupter limit switches
- ✓ Supports USB, I2C, SPI, and LV-TT-UART communications
- ✓ Single 5V supply (via USB or pin connector)
- ✓ Over-current and over-temperature protection
- ✓ Small size

### MCR600 specifications

Supported lenses	TL1250P R4, TL1250P R6 TL936P R4, TL936P R6 TL410P R4, TL410P R6, ML410P R6
Board size	60mm x 25mm x 10mm (without cables)
Board weight	10g
Mounting holes	4x M2
Operating voltage	5V (via USB or pin)
Operating current	Up to 150mA



For more information contact  
Theia Technologies

info@TheiaTech.com  
+1-503-570-3296