

PCAM Installer User's Manual

Version 3.0.6

March 7, 2012

GPI360, Inc.

PCAM Installer[®] User's Manual

Document Part Number: IT121107-1

Document Version: 3.0.6

Revised: April 13, 2012

About This Document

This document is prepared for users of GPI360 products supplied by GPI360. Inc. It is assumed that the users are familiar with Microsoft Windows operating systems and Web browsers such as Internet Explorer. It is also assumed that the users are well aware of how to install and use the network equipment such as LAN, Hub, router, and having basic knowledge of network terminologies. If you have any questions regarding network installations, please contact your network equipment vendor or network administrator or Internet service providers.

For updated contents, detailed features and other applications from GPI360, please refer to the user's manual in CD-ROM provided with the product you purchased,

Copyright Notice

Copyright © 2012 GPI360. Inc. All rights reserved.

No part of this document may be reproduced in any form or by any means without the prior written permission of GPI360. Inc.

Disclaimer

GPI360. Inc. (GPI360) Makes no representations or warranties with respect to the contents hereof. In addition, information contained herein is subject to change without notice. Every precaution has been taken in the preparation of this manual, nevertheless, GPI360 assumes no responsibility for errors or omissions or any damages resulting from the use of the information contained in this document.

Trademarks

GPI360[®] and GPI360[®] Logo are trademarks of GPI360. Inc.

Windows and Internet Explorer is trademark of Microsoft Corporation.

All other trademarks belong to their respective owners.

Technical Support

For technical support call, email.

Telephone: +1-909-595-8484 (#1003)

Email: ed@gpi360.com

Table of Contents

- 1. About IP Installer 4
- 2. Installing and Uninstalling 4
 - 2.1. Installing IP Installer 4
 - 2.2. Uninstalling IP Installer 7
- 3. Using IP Installer 10
 - 3.1. Starting the Program 10
 - 3.2. Search Product 12
 - 3.3. Manual Network Setup 13
 - 3.3.1. When one IP device is selected.. 13
 - 3.3.2. When two or more IP devices are selected.. 14
 - 3.4. Automatic Network Setup 15
 - 3.5. Using DHCP Server 18
 - 3.6. Using PPPoE 18
 - 3.7. Updating Firmware 20
 - 3.8. Filter Configuration 21
 - 3.9. Live View 22

1. About IP Installer

IP Installer is a proprietary utility program exclusively designed for GPI360 products supplied by GPI360. It enables users of GPI360 products to search their network for any GPI360 network camera, video server, or network video recorder no matter what IP address it has. By using IP Installer, users will be able to facilitate network setup process for GPI360 products deployment.

- Runs on Microsoft Windows operating system (XP, Vista, 7)
- Searching for Network Cameras, Video Servers, and Network Video Recorders
- Capable of firmware updating for GPI360 products
- Support automatic and manual IP setup

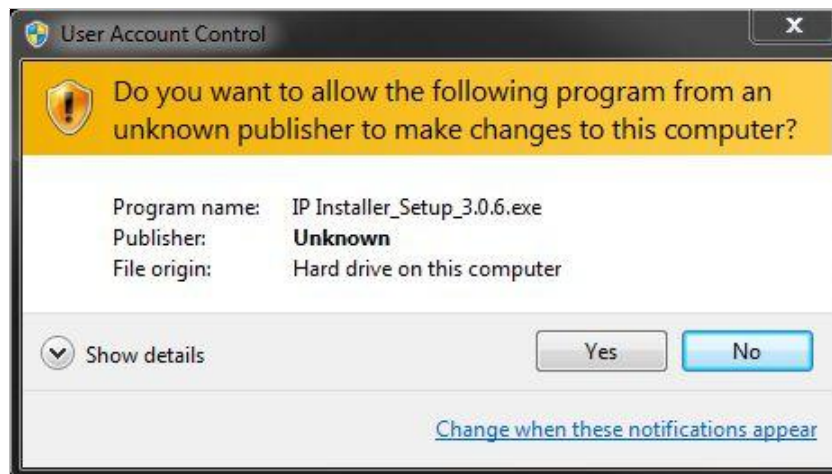
2. Installing and Uninstalling

2.1. Installing IP Installer

If the program is started from the CD supplied with GPI360 products, insert the CD to the ODD tray and check the installation file. If it is download or copied from the Internet or any other media, locate the file from the PC's hard drive. You will see the icon as shown with the file name IP Installer_Setup_3.0.6.exe. The actual file name in your case may vary as the version changes. Double click the icon to start installation.



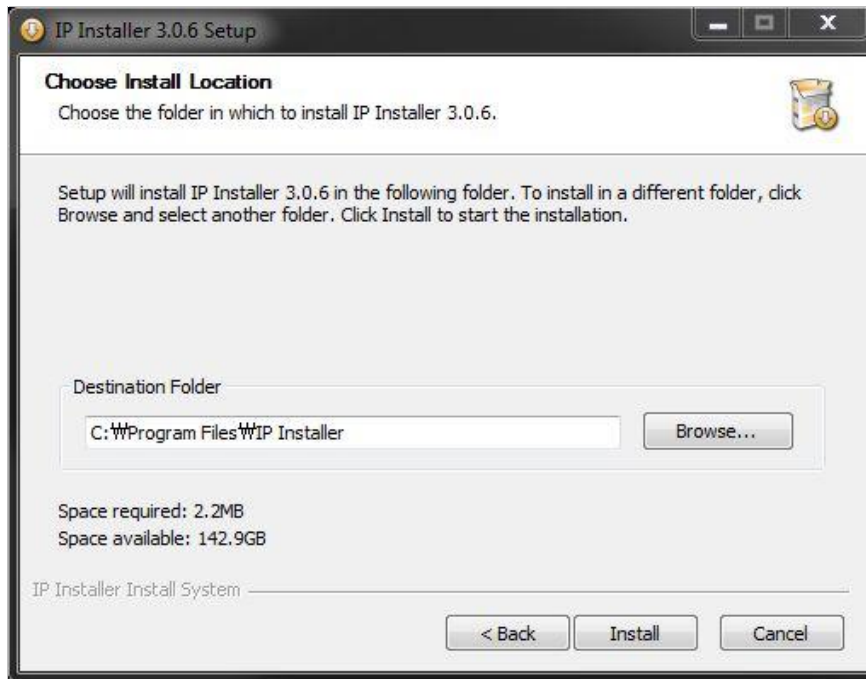
You may see a consent prompt for running this install program, which is an User Account Control of the Windows as shown below.



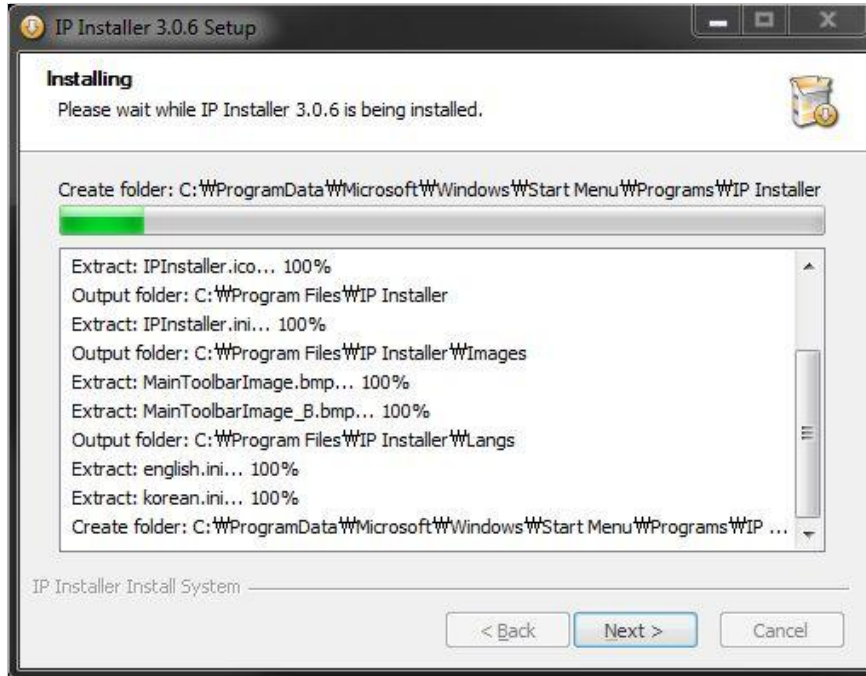
Click Yes button, then the following window will be shown on the screen.



To precede the installation, click Next button. The following window will be displayed for location to install.



The default location for installation is **C:\Program Files\IP Installer**. It is recommended to install on this folder, but if you want to change it to other location, click Browse button to choose a proper path as you'd like. Now click Install button. You will see the progress of copying install files to the hard drive as shown below.



When the file copying is done, the following windows will be shown. Click Finish button to finish the installation.



2.2. Uninstalling IP Installer

If you want to remove the IP Installer program from your PC, click Start > All Programs > IP Installer > Uninstall.



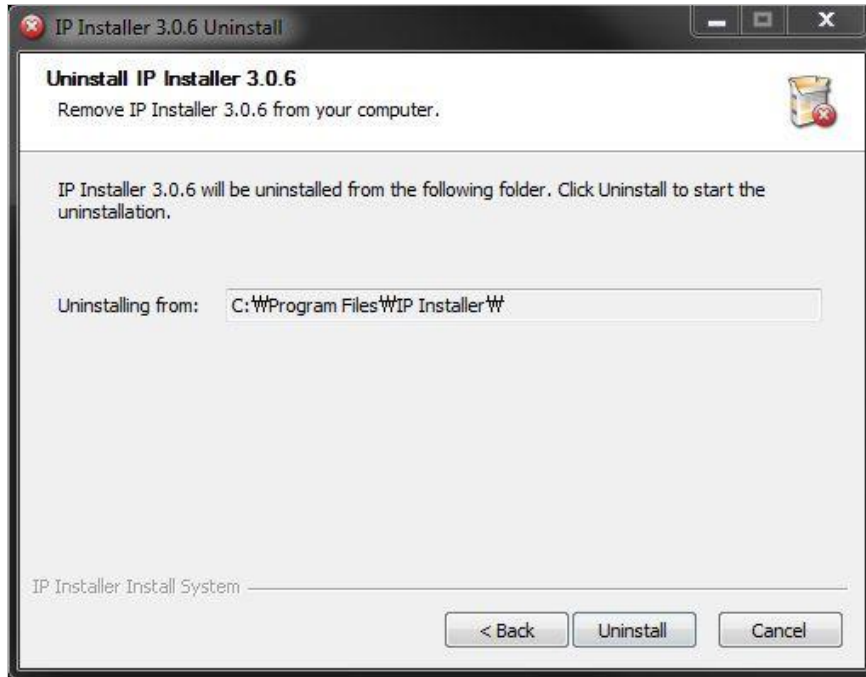
You may see a consent prompt for running this install program, which is an User Account Control of the Windows as shown below.



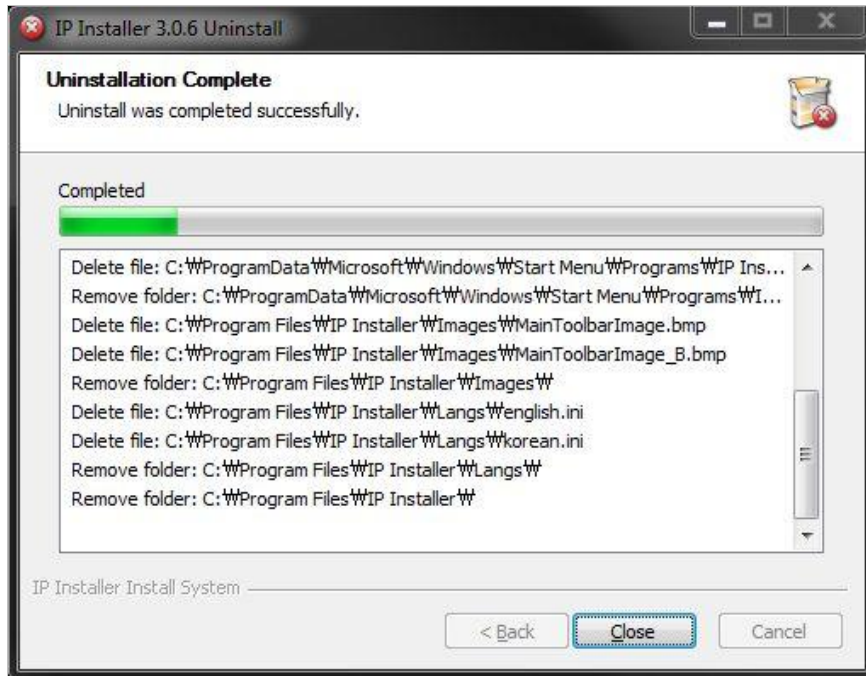
Click Yes button, then the following window will be shown on the screen.



Click Next button and you will see the following window.



Click Uninstall button to start removing the IP Installer program from your computer. The following window will be displayed. Click Finish button to close the window.





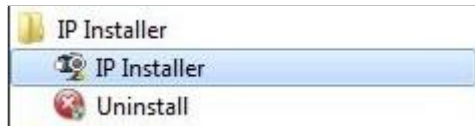
3. Using IP Installer

3.1. Starting the Program

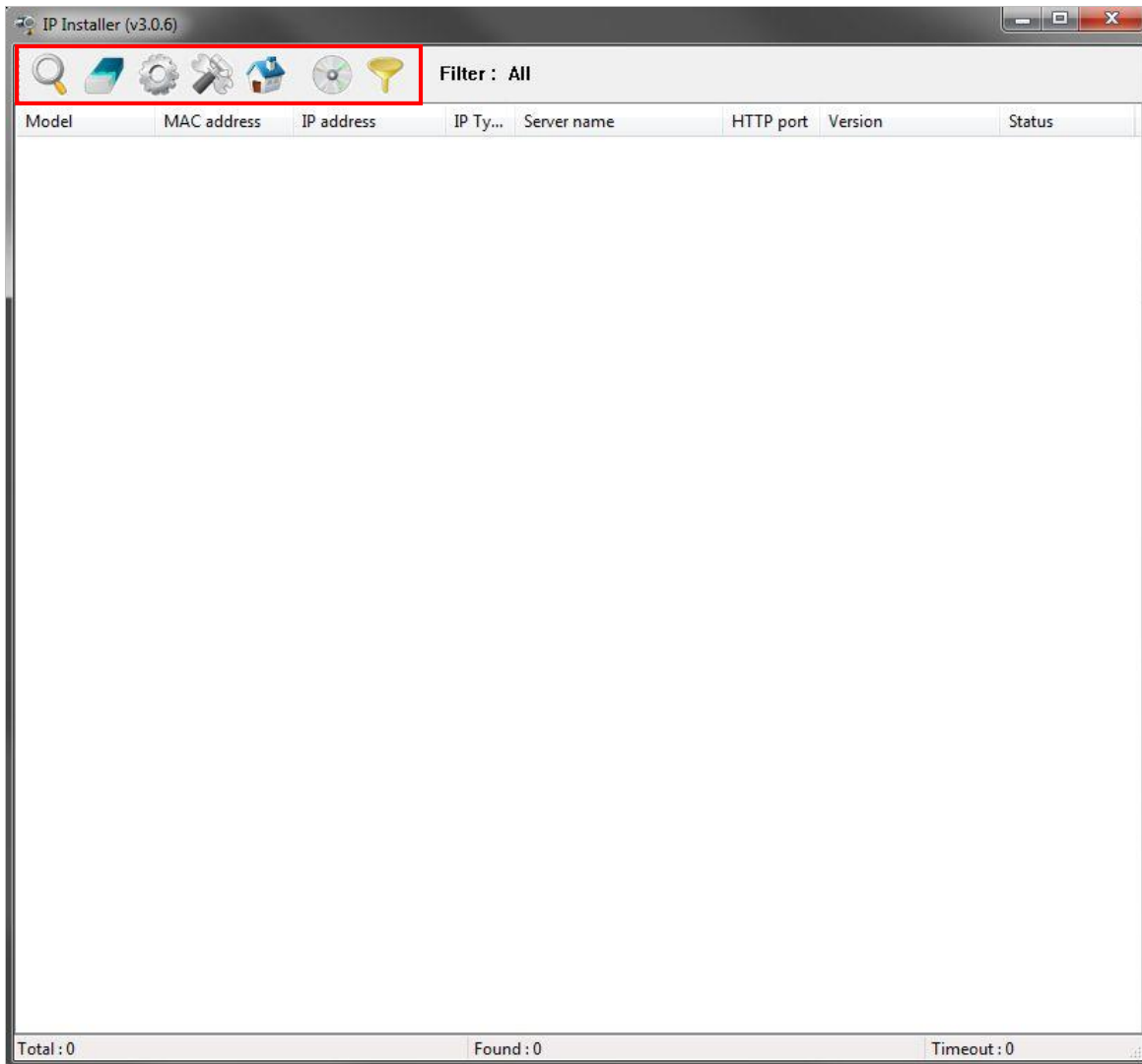









Once IP Installer program has been installed on your computer, a shortcut icon should be created on the desktop of you computer. You can start IP Installer by double clicking the icon.

Or you can also start the program by clicking Start > All Programs > IP Installer > IP Installer as shown below.



After the program is started, the main window of IP Installer program will be appear on the screen as shown below. There is no network device shown since it is the first time to run the program and nothing has been registered.

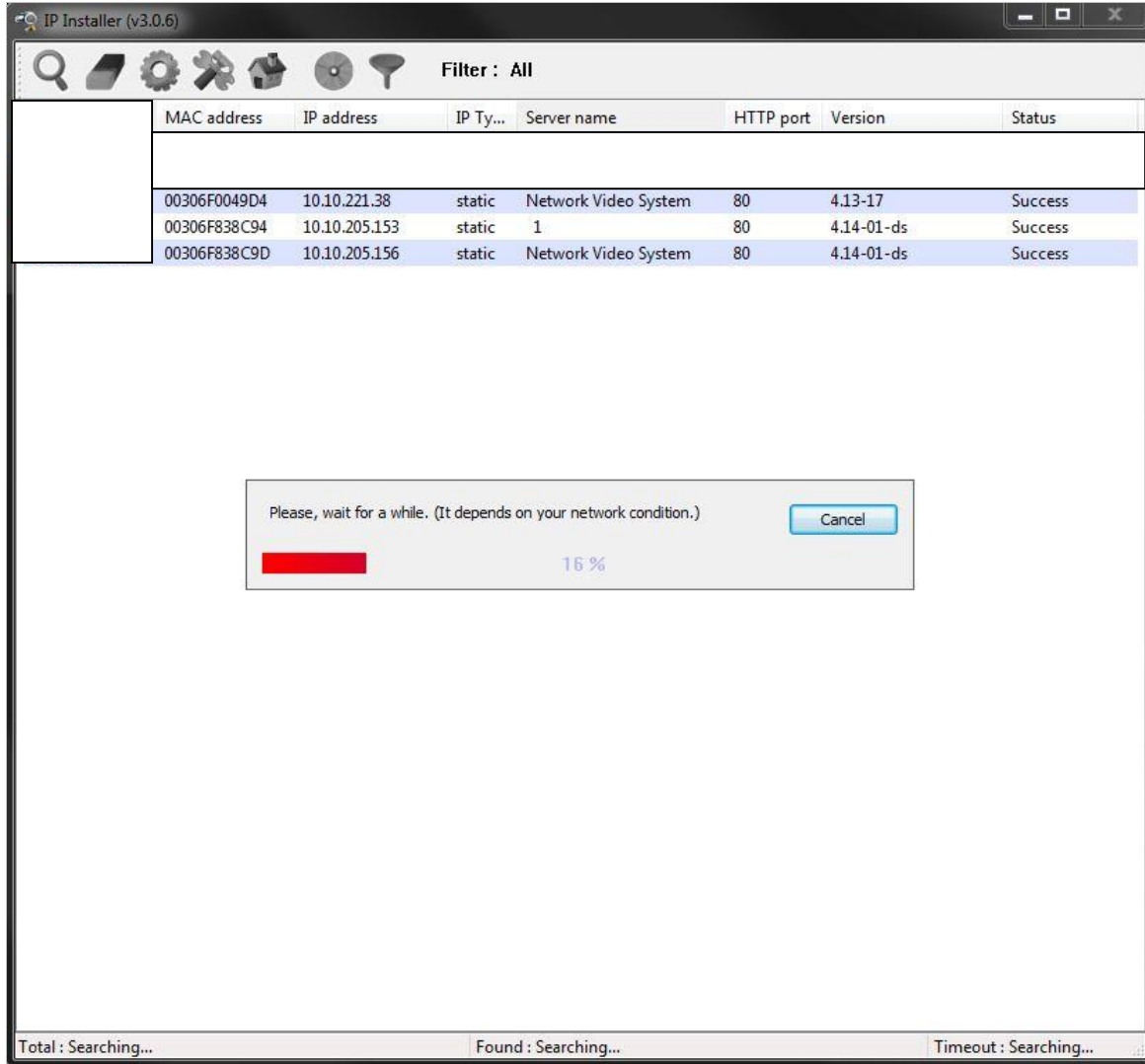


	Search Product	Scan the network and show the list of all the GPI360 products that IP Installer program found.
	Clear Product List	Clear the GPI360 products list created by searching the network.
	Automatic IP Setup	Configure the network setting of selected IP device in Automatic mode.
	Manual IP Setup	Configure the network setting of selected IP device in Manual mode.
	Connect Product Homepage	Connect to the server homepage of the selected IP device.
	Update Firmware	Update the firmware of the selected IP device.
	Filter Configuration	Define the range of MAC and IP addresses to search.

3.2. Search Product



Make sure that your GPI360 products are connected to the network, and click the Search Product button. A status window will pop up to show the progress of the searching. Wait until it reaches 100%, or you may press Cancel button if you will go ahead with the result made until the moment.



After searching is finished, IP Installer program will display the notification window of completion of searching. Click OK button to clear the window.



If you want to clear the list of the IP Devices from the window, click Clear Product List button from the Main Toolbar.

3.3. Manual Network Setup



Configuring the network parameters of the devices in the list can be started either by clicking right mouse button or by clicking Manual IP Setup icon on the main Toolbar.

Before starting the setup, you first need to choose the one to be configured. You may choose only one device by clicking it, or you can choose two or more devices by clicking one after another while you keep pressing CTRL key of your keyboard.

3.3.1. When one IP device is selected..

MAC Address	MAC address of the selected device is shown.
Server Name	Name of the selected IP device.
HTTP Port	HTTP port number of the IP device for web access to homepage.
IP Type	How to assign IP address to the device (Select Static here for Manual IP Setup)

Network	General network parameters are required in this part. Please contact your network administrator for detail. (IP Address, Netmask, Default Gateway, DNS1, DNS2)						
Wireless Information	<p>Enter the values for connecting to wireless network. Contact your network administrator for details. (Only available for devices with Wireless option)</p> <ul style="list-style-type: none"> Auth Mode: Choose from Open System, Shared Key, WPAPSK, WPA2PSK. ESSID: Enter the name of the Access Point to connect to. Encryption: Choose from None, WEP, TKIP, AES. The selections are dependent on which Authentication mode as below. <table border="1"> <thead> <tr> <th>Authentication Mode</th> <th>Supported Encryption</th> </tr> </thead> <tbody> <tr> <td>Open, Shared</td> <td>N/A or WEP</td> </tr> <tr> <td>WPAPSK, WPA2PSK</td> <td>TKIP, AES</td> </tr> </tbody> </table> <ul style="list-style-type: none"> WEP Mode: Select either 64-bit or 128-bit modes, or either HEX or ASCII. KEY1 – 4: Enter WEP Keys accordingly to Key numbers. WPAPSK: If you chose to use WPASK or WPA2PSK mode in Auth mode, enter here the appropriate TKIP or AES value. The maximum length is 63 ASCII characters. 	Authentication Mode	Supported Encryption	Open, Shared	N/A or WEP	WPAPSK, WPA2PSK	TKIP, AES
Authentication Mode	Supported Encryption						
Open, Shared	N/A or WEP						
WPAPSK, WPA2PSK	TKIP, AES						
Authentication (Admin Password)	Password for the IP device. (Default password for GPI360 products is "root" unless already changed)						
Save Configuration Option	<p>Select whether the configured contents is to be saved in the Flash memory or not.</p> <ul style="list-style-type: none"> Save Configuration: Changed values will be saved in the Flash memory of the device, which means the changes are permanent. Not Saving: Changed values will not be saved in the Flash memory, which means if the IP device is turned off the changes are lost and the previous setting will be applied back. 						

Click Set button to apply the changed values to IP device. If you don't want it, click Cancel button.

3.3.2. When two or more IP devices are selected..

You can select two or more IP devices at the same time by click one after another while CTRL key is pressed. The result is shown as below.

To configure the network parameters of those devices, click the right mouse button or click Manual IP Setup icon on the main Toolbar with multiple IP devices selected.

You can modify the value of each changeable field by clicking it.

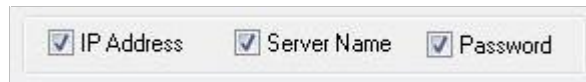
Model	Model Numbers of the IP devices that you selected.
MAC Address	MAC address of the selected device is shown.
Server Name	Name of the selected IP device.
IP Type	How to assign IP address to the device (Select Static here for Manual IP Setup)
IP address, Netmask, Gateway, DNS1, DNS2	General network parameters are required in this part. Please contact your network administrator for detail.
HTTP Port	HTTP port number of the IP device for web access to homepage.

Password	Password for the IP device. (Default password for GPI360 products is "root")
----------	--

If you click Apply to all button after change just a field of one IP device, the remaining IP devices will have the same value for that parameter. In this case, each device's Server name and IP Address field will have +1 incremented value added to the original value. For example, if the first IP device has been given the server name of NetCam and Apply to all button is pressed, it will be automatically changed to NetCam1 and the next IP device will have NetCam2 and so on. The same applies to the IP address field.

For Password field, the entered information doesn't incremented but will use the same data.

In using Apply to all, you can choose which field is affected. Put check marks only on the devices you want to use this automatic action as below.

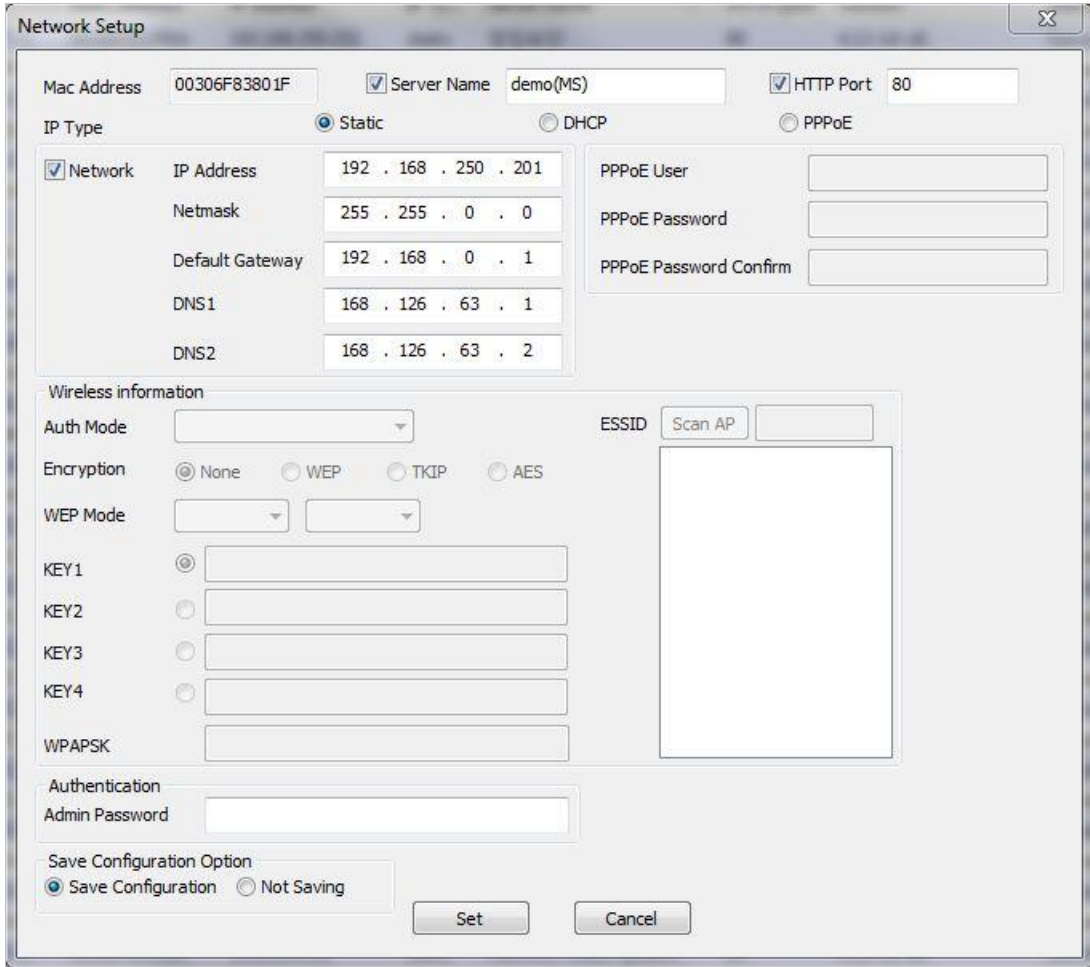


Click Save & Close button to save the changed values in the Flash memory of all the IP devices and close the Network setup window.

3.4. Automatic Network Setup



Configuring the network parameters of the devices in the list can be started either by clicking right mouse button or by clicking Automatic IP Setup icon on the main Toolbar. Before starting the setup, you first need to choose the one to be configured. In this setup mode, IP Installer program checks your local network and assigns available IP addresses to the IP devices. You have a choice of using those automatically assigned IP addresses, or you can just enter other IP addresses as you desire.

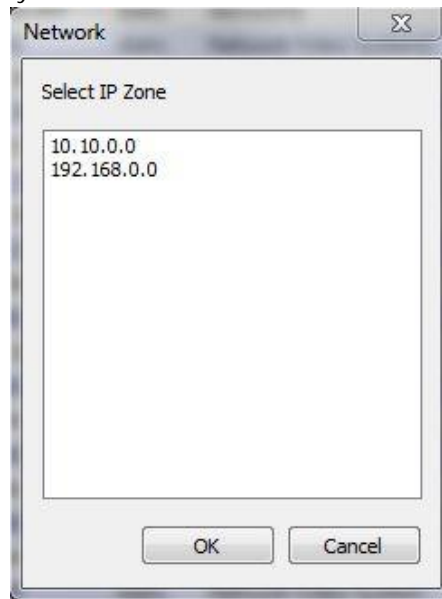


Server Name	Name of the selected IP device.
HTTP Port	HTTP port number of the IP device for web access to homepage.
IP Type	How to assign IP address to the device (Select Static here for Manual IP Setup)
Network	General network parameters are required in this part. Please contact your network administrator for detail. (IP Address, Netmask, Default Gateway, DNS1, DNS2)
Authentication (Admin Password)	Password for the IP device. (Default password for GPI360 products is "root")
Save Configuration Option	<p>Select whether the configured contents is to be saved in the Flash memory or not.</p> <ul style="list-style-type: none"> Save Configuration: Changed values will be saved in the Flash memory of the device, which means the changes are permanent. Not Saving: Changed values will not be saved in the Flash memory, which means if the IP device is turned off the changes are lost and the previous setting will be applied back.

Click Set button to apply the changed values to IP device. If you don't want it, click Cancel button to restore the

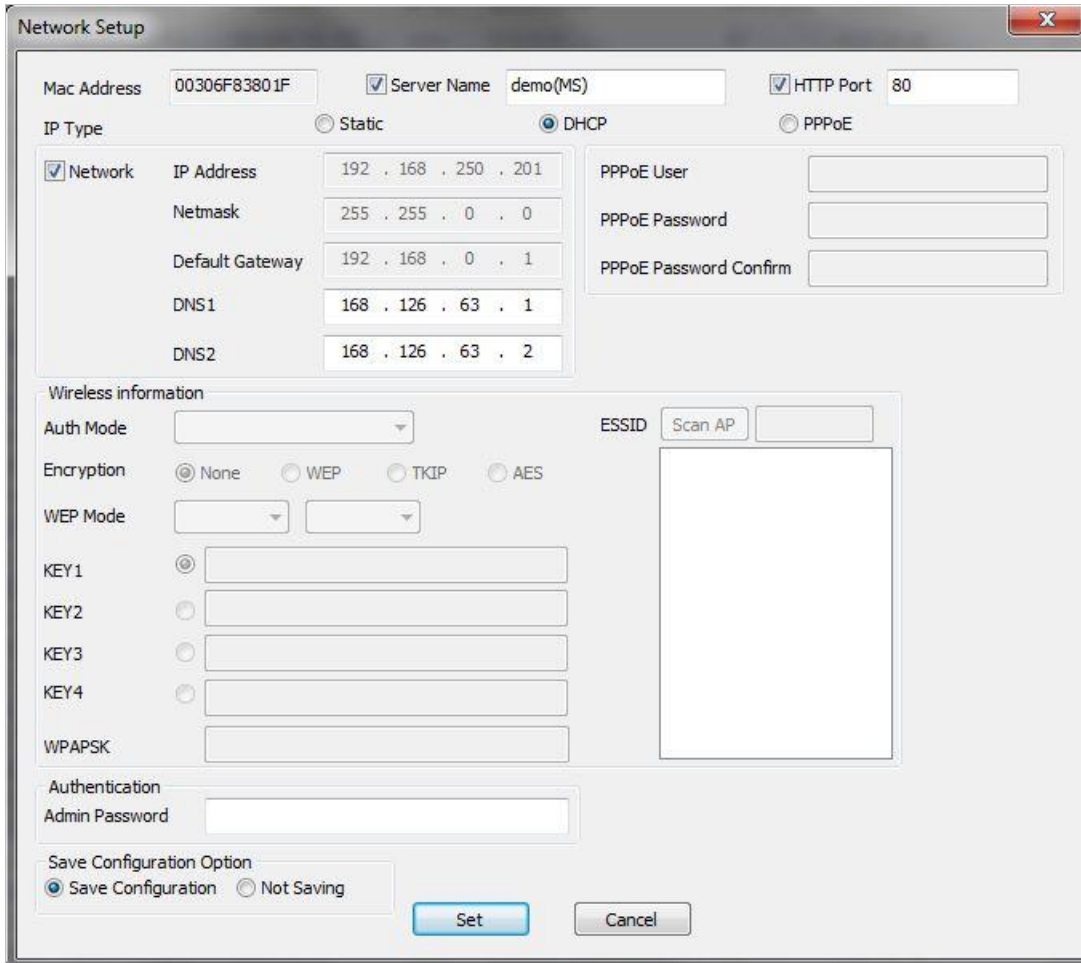
previous values.

Note: If your network has more than one IP address classes at the same time, the confirmation window will be displayed as below. You need to choose the one you are going to use for your IP devices.



3.5. Using DHCP Server

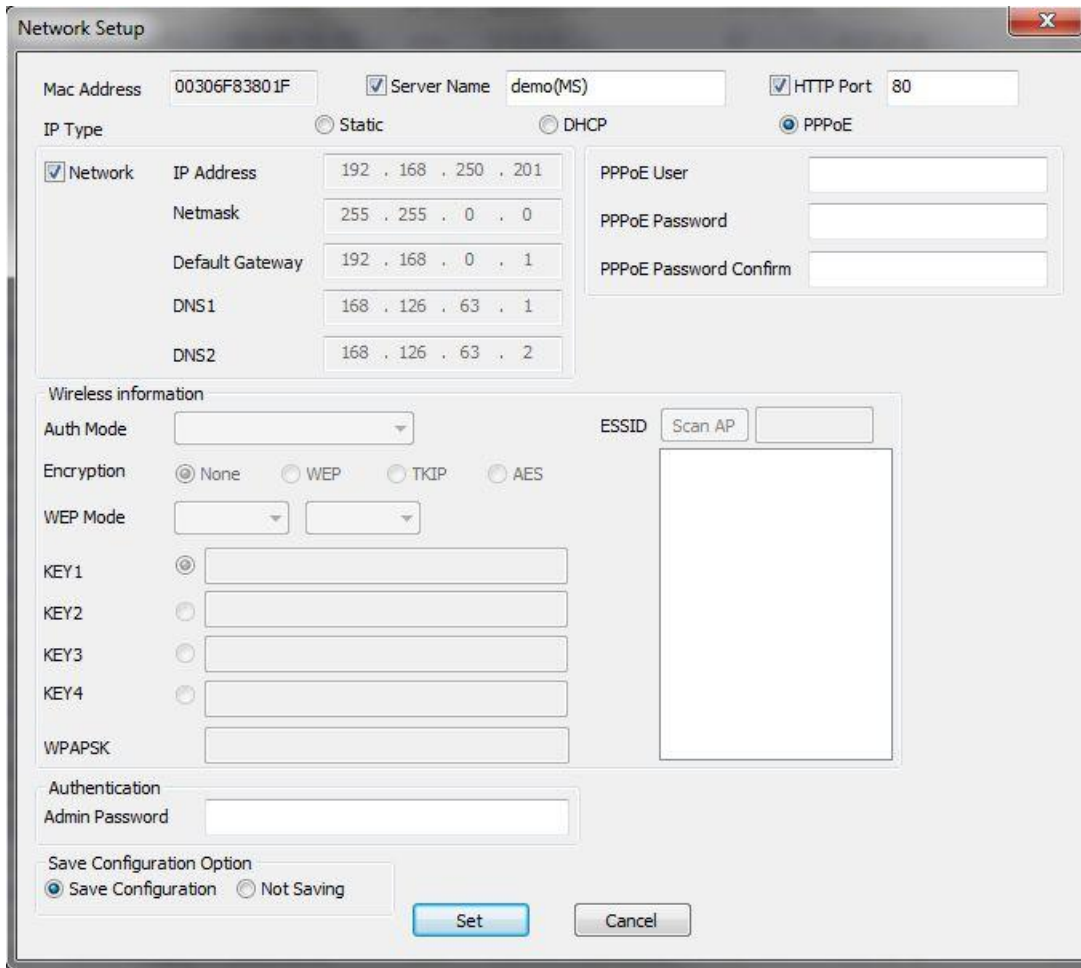
If your network has a DHCP server running for assigning IP addresses, you may choose to let it assign IP addresses to the IP devices on the list. To do that, first open the Network Setup window either by Manual IP Setup or Automatic IP Setup procedure. Choose DHCP in IP Type selection, then IP Address, Netmask, Default Gateway field in Network setup area on the window will be disabled to input as shown below.



For setting up other fields on the setup window, refer to 3.3 Manual Network Setup. After filling up the fields with appropriate values, click Set button to apply the changed values to IP device. If you don't want it, click Cancel button to restore the previous values.

3.6. Using PPPoE

If your network environment is based on PPPoE connection, you'll need to choose PPPoE on IP Type selection. First open the Network Setup window either by Manual IP Setup or Automatic IP Setup procedure. Choose PPPoE in IP Type selection, then all the fields in Network setup area on the window will be disabled. The network settings such as IP Address, Netmask, Default Gateway, DNS are no longer available to enter. You only need to enter the Server Name, HTTP Port number, and login authentication for your PPPoE connection.



Note: In PPPoE mode, Wireless configuration is not available.

MAC Address	MAC address of the selected device is shown.
Server Name	Name of the selected IP device.
HTTP Port	HTTP port number of the IP device for web access to homepage.
IP Type	How to assign IP address to the device (Select PPPoE in this mode)
PPPoE	User Authentication for PPPoE Connection. <ul style="list-style-type: none"> • PPPoE User: Enter User ID. • PPPoE Password: Enter Password for the User ID. • PPPoE Password Confirm: Enter the same Password again.
Authentication (Admin Password)	Password for the IP device. (Default password for GPI360 products is "root" unless already changed)
Save Configuration Option	Select whether the configured contents is to be saved in the Flash memory or not. <ul style="list-style-type: none"> • Save Configuration: Changed values will be saved in the Flash memory of the device, which means the changes are permanent. • Not Saving: Changed values will not be saved in the Flash memory, which means

if the IP device is turned off the changes are lost and the previous setting will be applied back.

Note: After setting up the network for the IP devices, make sure the IP devices are accessible on the network from your computer. It can be done by running Live View function of the homepage of the IP device's built-in server. Refer to 3.9 Live View section for how to do it.

3.7. Updating Firmware

Once IP devices are searched and shown on the screen as functioning successfully, you can update the firmware of them in IP Installer program. To do that, first check the firmware version of the device, which you can find on the IP Installer window.

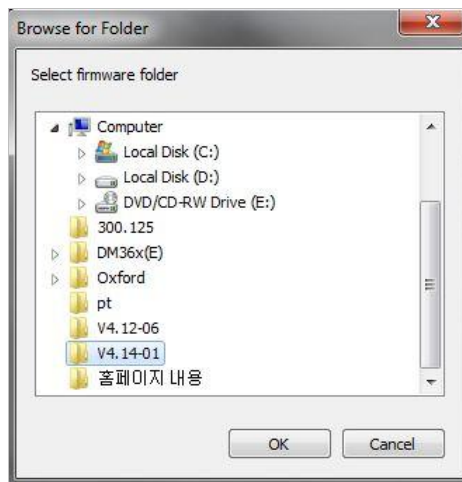


If you decide to update the firmware, first download the latest firmware into the hard drive of your computer. Unzip the file if it is compressed.

Then select the IP device to be updated on IP Installer window, then click Update Firmware button from the toolbar. The following window will be displayed.

You may find the Password field is empty on the window shown above. If so, click the Password field of the IP device and enter the proper password for the device. You are not allowed to update the firmware if the correct password is not provided.

After the password is entered, the Start Update button will be enabled now. Click the button to see the following window for selecting the firmware files.



Locate the firmware files on the hard drive and click OK button. The firmware updating will start.

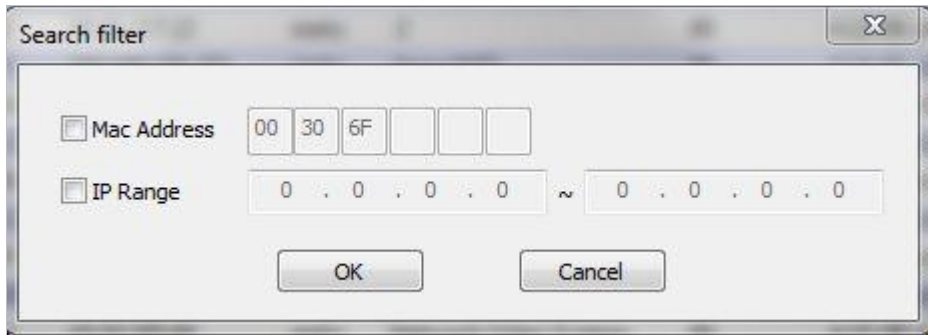
You can also select multiple IP devices at the same time, and have them start firmware updating in a single step. Select the files to update by using CTRL key

Click Start Update button.

3.8. Filter Configuration



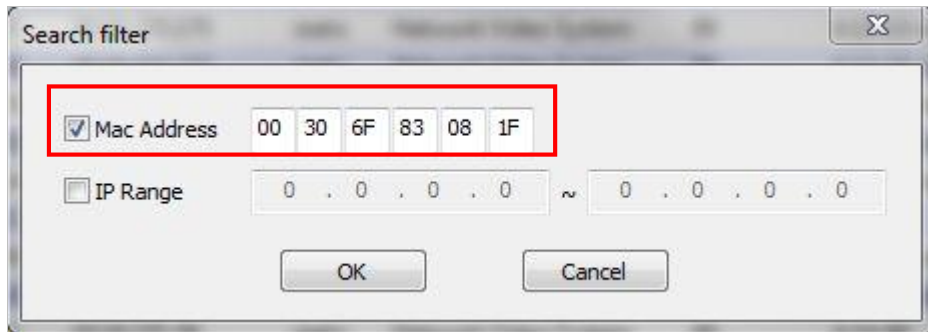
When you need to search only for the IP device having a specific range of MAC or IP addresses, you can do it by using this feature. To set the search condition, click Filter Configuration button on the Toolbar, then the following window will show up on the screen.



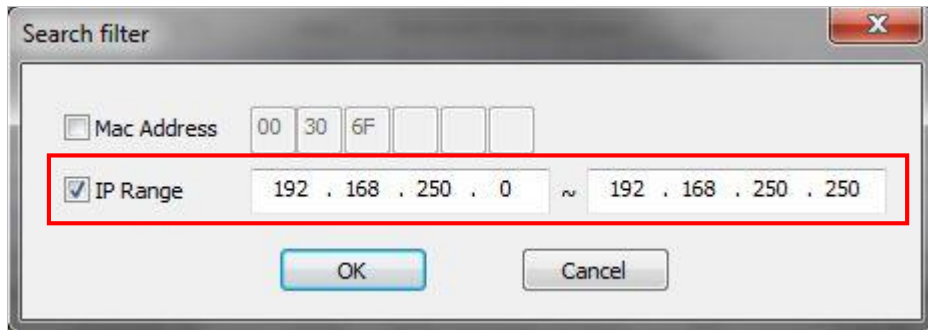
The first six HEX characters are already filled with 00:30:6F, which is MAC prefix for GPI360's products. Put a checkmark MAC Address or IP Range to set the range for searching.

You can set the range of IP addresses to scan as shown below. In this example, all the IP devices having MAC address starting with 00:30:6F will be listed on the result window after scanning.

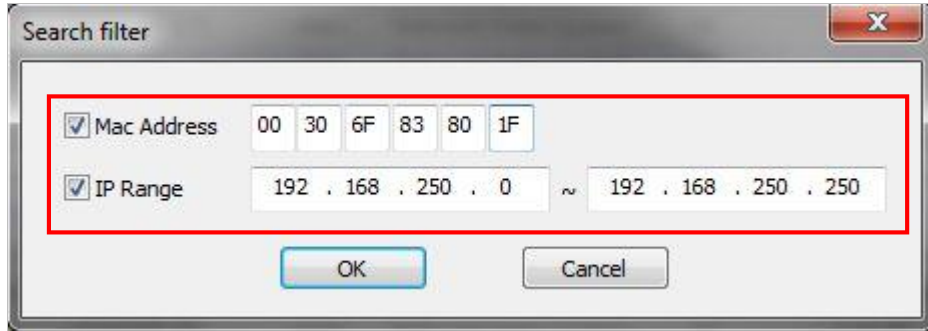
Or you can look for a single IP device having a specific IP address as below.



IP Address range for searching can be entered as follows.



You may even set both MAC Address and IP Range together at the same time.



After setting the searching range as explained above, click OK button. Then IP Installer program window will show the searching range on the top right portion of the window.



To start searching with this condition now, click Search Product button on the toolbar. The program will start searching and show the result after a moment.

3.9. Live View

Once searching and configuration on IP devices are done, you should make sure that the IP devices are accessible with the new settings. The best way to do it is by connecting the homepage of each IP device's built-in server, and starting Live View feature.

Select Go Product Homepage when you click the mouse right button on the IP device to test.