

RICOH
imagine. change.

...vision...far beyond imagination.

55X ZOOM LENS H55ZCME-F-HD-PR01

- Up to 1,680 mm Focal Range
- HD Resolution
- PAIR-Technology
- Megapixels
- High Speed Motors
- 1/2", C-Mount
- Iris Override
- Compact and Robust
- Optimised for use in Port Facilities, Border Patrol, Coast Oil Fields, Highway Monitoring etc.



PAIR
Pentax Atmospheric Interference Reduction

HD RESOLUTION

55X (140X with 2.5X extender) ZOOM

The lens's zoom range is 12 to 660 mm, and when the internal 2.5X extender is switched in, the focal length increases to 30.5 to 1,680 mm. With 1,680 mm focal length at 1,000 m distance, the field of view is 3.8 m by 2.8 m. The extremely high magnification in combination with HD resolution means a person can be identified at distances in excess of 600 m. Therefore, this lens is ideal for video surveillance in city centers, air ports, harbours, as well as for border control, intersections, city streets and highways.

TECHNICAL SPECIFICATIONS

Model	Format size	Mount	Focal length in mm	Iris range	Iris control	M. O. D.	Horizontal angle of view	Filter size in mm	Zoom Speed	Focus Speed
H55ZCME-F-HD-PR01	1/2"	C	12 - 660	4 - 360	VS	7 m	31.6 - 0.6°	105	4.5 sec	5 sec
with 2.5x extender*			30.5 - 1,680	10 - 900			12.1 - 0.2°			

* The extender needs 2 seconds to be activated/deactivated

PAIR-TECHNOLOGY FOR BETTER IMAGE QUALITY AVAILABLE FOR H63ZME-F-HD-PR01

PAIR-Technology reduces the effect of particles in the air, such as fog, rain, sand, smoke and snow.

The **integrated electronic image stabiliser** is particularly useful at telephoto, when even small movements of the lens or pan/tilt head, or the effects of wind buffeted the mast will cause blur. The image stabiliser corrects the blur in "real time" allowing monitoring even when other systems cannot provide useful images any more.

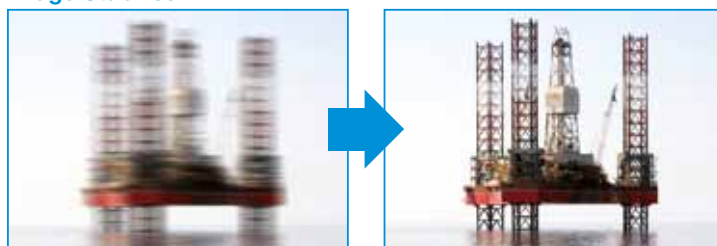
The **provided software** allows remote control of lens functions, including zoom, focus, iris and operation of the **internal 2.5X Extender**. In addition, the software includes **reliable autofocus** with the click of a mouse – a useful advantage in the super-telephoto position, when depth of field is extremely low.

The lens is equipped with standard **RS232, RS422 & RS485 interfaces**. It comes with open platform control software and is compatible with HD-SDI and VGA CCTV cameras.

All functions are incorporated into the lens making installation and system integration as simple and cost effective as possible.

The **HD optics** in the lens offer significantly higher resolution over standard VGA lenses. HD offers 4X higher resolution.

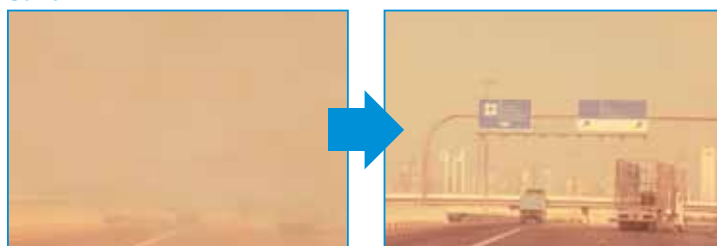
Image Stabiliser



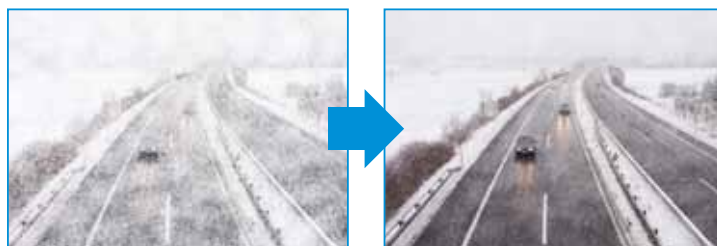
Fog



Sand



Snow



RICOH
imagine. change

www.ricoh-mv-security.eu

**RICOH IMAGING
DEUTSCHLAND GmbH**

**Industrial Optical
Systems Division**

Am Kaiserkai 1, 20457 Hamburg
Office: +49 (0)40 532 01 33 66
Sales: +49 (0)40 532 01 33 66
Fax: +49 (0)40 532 01 33 39
Email: iosd@eu.ricoh-imaging.com

