

MV-CL042-70CM

4K Line Scan CMOS CameraLink Camera

Introduction

MV-CL042-70CM camera is a high quality device that can be used in a variety of applications, including printing inspection, display inspection, wafer testing, PCB inspection and metallurgical testing.



Key Feature

- CameraLink interface, supporting Base, Medium and Full mode
- Supports RS232 serial port communication
- Supports exposure time control and gain adjustment
- Supports PRNU function
- Supports custom LTU and Gamma correction
- Supports various lens interfaces
- Compact structure design, with mounting holes on back and side panels for flexible mounting

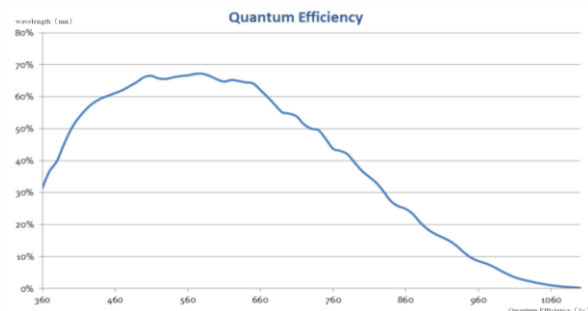
GEN*i*CAM



Recommended Accessories

- **Power:** 12VDC @2A power adapter
- **CameraLink Card:** Dalsa, Matrox and Euresys recommended
- **CameraLink Cable:** compatible with CameraLink standard recommended, SDR interface from camera's side

Sensor Quantum Efficiency



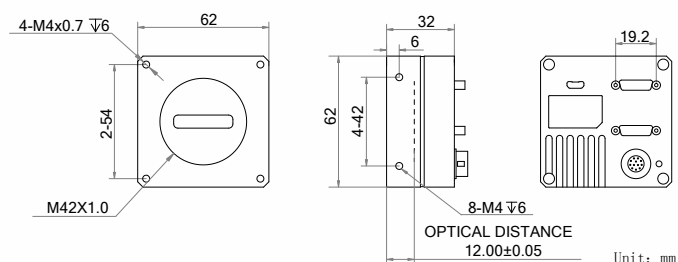
Applicable Industry

Printing inspection, display inspection, wafer testing, PCB inspection, metallurgical testing

Available Model

- Mono: MV-CL042-70CM

Dimension



Specification

Model	MV-CL042-70CM		
Parameters	4K Line Scan CMOS CameraLink Camera		
Camera			
Sensor type	CMOS		
Pixel size	5 μm x 5 μm		
Resolution	4096 x 2		
Configured mode	Base	Medium	Full
Line rate	40 KHz	80 KHz	100 KHz
Sensor combination	2X-1Y	4X-1Y	4X2_1Y
Tap number	2 Taps	4 Taps	8 Taps
Pixel format	Mono 8/10/12		Mono 8
Pixel clock	85 MHz		
Shutter mode	Support fixed exposure time		
Dynamic range	60 dB		
SNR	40 dB		
Gain	0 dB to 12 dB		
Exposure time	2 μs to 10 ms		
External trigger mode	Line trigger and frame trigger		
Synchronization trigger mode	External trigger or software trigger		
Electrical features			
Data interface	CameraLink		
Digital I/O	12-pin Hirose interface for power supply and I/O: differential signal input x2, differential signal output x2, supporting 5V differential signal I/O		
Power supply	12 VDC to 24 VDC,		
Power consumption	Approx. 3.5 W @12 VDC		
Structure			
Lens mount	Optical back focal length 12mm M42 × 1.0, adapter can be used to connect F-mount, C-mount and other lenses.		
Dimension	62 mm × 62 mm × 32 mm (2.4" × 2.4" × 1.3")		
Weight	Approx. 150 g (0.3 lb.)		
Ingress protection	IP40 (under proper lens installation and wiring)		
Temperature	Working temperature: 0 °C to 50 °C (32 °F to 122 °F) Storage temperature: -30 °C to 70 °C (-22 °F to 158 °F)		
Humidity	20% to 80% RH, without condensation		
General			
Client software	MVS and frame grabber software meeting with GenICam protocol		
Operating system	32/64-bit Windows XP/7/10, 32/64-bit Linux and 64-bit MacOS		
Compatibility	CameraLink 2.0, GenICam		
Certification	CE, FCC, RoHS, KC		