

## MV-CH250-20TM 25MP, 23mmx23mm CMOS, 10GigE Camera

10GigE  
VISION



The Hikvision MV-CH250-20TM 25 MP 23mmx23mm CMOS 10GigE Camera is a high quality device that can be used in a variety of applications, including SMT automatic optical detection, PCB AOI, FPD detection, railway related applications and

### Key Features

- 25 MP resolution, pixel size of 4.5µm
- 1024MB on-board buffer, for image burst transmitting and retransmitting
- 10 Gigabit Ethernet interface providing 10 Gbps bandwidth, downward compatible to Gigabit Ethernet. Transmitting distance can be 100m without relaying
- Support serial port communication, communication protocol RS232 or full-duplex RS485
- Optional M58 or F-mount
- Compact construction design with mounting holes on the up and bottom panels for flexible mounting

### Application Scenarios

- SMT automatic optical detection
- PCB AOI
- FPD detection
- Railway related applications

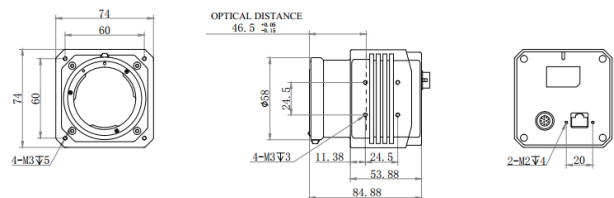
### Order Model

Mono, M58-mount with cooling fan: MV-CH250-20TM-M58S-NF

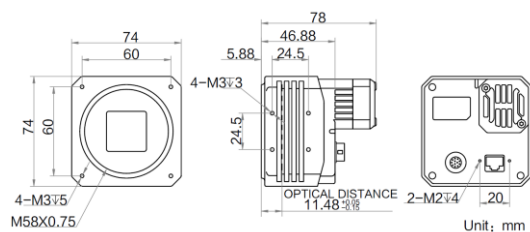
Mono, F-mount with cooling fan: MV-CH250-20TM-F-NF

### Dimensions

F-mount:



M58-mount:



Unit: mm



## Specifications

Model	MV-CH250-20TM
Parameters	25MP, CMOS, 10GigE Camera
<b>Camera</b>	
Sensor	PYTHON 25K
Resolution	5120×5120
Pixel Size	4.5μm×4.5μm
Sensor Size	23mm×23mm
Frame Rate	40fps
Dynamic Range	>58dB
SNR	>40dB
Gain Range	0-15dB
Exposure Time	17μs-10sec
Shutter Mode	Global Shutter. Auto-Exposure, Manual Exposure, One-key Exposure
Data Interface	10 Gigabit Ethernet
General Purpose I/O	12 pin IO, Opto-isolated input x1, Opto-isolated output x1, Bi-directional non-isolated I/O x1, RS232 x1, full-duplex RS485 x1
Image Buffer	1024MB
Data Format	Mono 8/10/10p/12/12p
<b>General</b>	
Power	< 14W@12VDC, 12V 2A/24V 1A power supply recommended
Temperature	Working Temperature 0~50°C, Storage Temperature -30~70°C
Humidity	20%~80% RH Without Condensation
Dimension	M58-mount with cooling fan: 74mm×74mm×78mm F-mount with cooling fan: 74mm×74mm×113mm
Weight	M58-mount with cooling fan: < 450g F-mount with cooling fan: < 600g
Lens Interface	M58-mount, optical back focal length 11.48 mm F-mount, optical back focal length 46.5 mm
Software	MVS or Third-Party Software supporting GigE Vision Protocol
Operating System	Windows XP/7/10 32/64bits
Compliance	GigE Vision
Certification	CE, FCC, RoHS

### Recommended Accessories

- **Power:** 12VDC @2A or 24VDC VDC @1A switching power or power adapter
- **NIC:** CZETHM10G Ethernet Network Card recommended
- **Network Cable:** CHOSEAL CAT6a or CAT7

### Spectral Response

