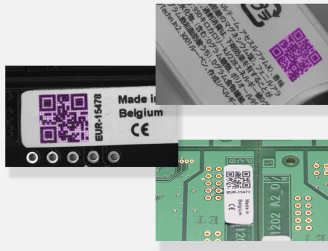


EasyQRCode

QR code reading library



At a Glance

- Automatic detection of the code in the image
- Decodes model 1 and model 2 QR codes, all versions, all levels
- Decodes Micro QR codes
- Very fast operation
- Impressive robustness to noise, blur and distortion
- Error detection and correction
- Rotation and flipping invariant
- Print quality verification with grading standards
- Multiple codes reading

Benefits

Open eVision Studio: Evaluation, prototyping and development tool

Open eVision Studio is the evaluation, prototyping and development tool of Open eVision. Its intuitive graphical user interface allows you to call and immediately see the result of any of eVision's 2D image processing functions. A scripting functionality generates the corresponding code, which can then be copied and pasted into your application.

Open eVision Studio is free (when using Open eVision 2.0 and above) and does not require any license.

Just click on [DOWNLOAD OPEN EVISION STUDIO](#) and install Open eVision. Sample images, manuals and sample programs are included.

EasyQRCode Description

QR codes are 2D bar codes. They are widely used for their fast readability, high reliability and their large storage capacity compared to ordinary barcodes.

EasyQRCode is a robust QR code reading library for industrial applications such as part identification and product or time tracking. These applications typically require the fast and reliable decoding of variable-content QR codes.

Automatic extensive decoding

The following code types are supported:

- Data: Kanji, numeric, alphanumeric, byte and mixed FNC1
- Model 1 QR Codes, all versions (1-14), all levels
- Model 2 QR Codes, all versions (1-40), all levels

DPM - Direct Part Marks

EasyQRCode algorithms have been specifically optimized to read direct part marks. They support the low contrast and distorted codes resulting from dot peening, laser marking, ink jet printing or electro-chemical etching on various materials.

Print quality verification

EasyQRCode inspects the quality of the QR code and computes indicators as defined by the ISO/IEC 15415 and ISO/IEC TR 29158 standards.

Also for Micro QR Codes

Open eVision can also detect and decode Micro QR Codes using its EQRCodeReader class.

A more compact version of the regular QR Code, used when less data need to be encoded.

Check it with the latest revision of Open eVision Studio & sample programs.

Neo Licensing System

- Neo is the new Licensing System of Euresys. It is reliable, state-of-the-art, and is now available to store Open eVision and eGrabber licenses.
- Neo allows you to choose where to activate your licenses, either on a Neo Dongle or in a Neo Software Container. You buy a license, you decide later.
- Neo Dongles offer a sturdy hardware and provide the flexibility to be transferred from a computer to another.
- Neo Software Containers do not need any dedicated hardware, and instead are linked to the computer on which they have been activated.
- Neo ships with its own, dedicated, Neo License Manager, which comes in two flavours: an intuitive, easy to use, Graphical User Interface and a Command Line Interface that allows for easy automation of Neo licensing procedures.

All Open eVision libraries are available for Windows and Linux

- Windows 7 to Windows 10, x86 (32 bits) and x86-64 (64 bits)
- Linux x86-64 (64 bits) with a glibc version 2.18 or newer

Applications

Machine Vision for the Electronic Manufacturing Industry

- Mark inspection

Machine Vision for the General Manufacturing Industries

- Product identification for traceability
- Code quality verification for label printing machines

Machine Vision for the Printing Industry

- Label and packaging inspection: Inspection of the quality of the printing of characters and codes

Specifications

Software

Host PC Operating System

- Open eVision is a set of 32-bit and 64-bit libraries that require a processor compatible with the SSE4 instruction set.
- The Deep Learning Bundle is only available in the 64-bit Open eVision library.
- Open eVision can be used on the following operating systems:
 - Windows 10 (32- and 64-bits)
 - Windows 8 (32- and 64-bits)
 - Windows 7 (32- and 64-bits)
 - Linux 64 bits (x86-64 only) with a glibc version greater or equal to 2.18
- Since Open eVision 2.6, discontinued support of:
 - Windows Vista 32-bits Service Pack 1
 - Windows XP 32-bits Service Pack 3
 - Windows Embedded Standard 2009 32-bits
- Remote connections
 - Remote connections are allowed using remote desktop, TeamViewer or any other similar software.
- Virtual machines
 - Linux virtual machines are supported. Microsoft Hyper-V and Oracle VirtualBox hypervisors have been successfully tested.
 - Windows virtual machines are not supported.
- Minimum requirements:
 - RAM: 8 GB
 - Display size: 800 x 600. 1280 x 1024 recommended.
 - Color depth: 16 bits. 32 bits recommended.
 - Between 100 MB and 2 GB free hard disk space for libraries, depending on selected options.

APIs

- Supported Integrated Development Environments and Programming Languages:
 - Microsoft Visual Studio 2008 SP1 (C++, C#, VB .NET, C++/CLI)
 - Microsoft Visual Studio 2010 (C++, C#, VB .NET, C++/CLI)
 - Microsoft Visual Studio 2012 (C++, C#, VB .NET, C++/CLI)
 - Microsoft Visual Studio 2013 (C++, C#, VB .NET, C++/CLI)
 - Microsoft Visual Studio 2015 (C++, C#, VB .NET, C++/CLI)
 - Microsoft Visual Studio 2017 (C++, C#, VB .NET, C++/CLI)
 - Microsoft Visual Studio 2019 (C++, C#, VB .NET, C++/CLI)
 - QtCreator 4.15 with Qt 5.12
 - Since Open eVision 2.5.1, discontinued support of:
 - Borland C++ Builder 6.0 update 4 (C++)
 - CodeGear Delphi 2009 (Object Pascal)
 - CodeGear C++ Builder 2009 (C++)
 - Microsoft Visual Studio 6.0 SP6 (C++, Basic)
 - ActiveX API
 - Since Open eVision 2.4.1, discontinued support of:
 - Embarcadero RAD Studio XE4 and XE5 (C++, Object Pascal, 32 bits only)
-

Ordering Information

Product code - Description

- 4175 - Open EasyQRCode for USB dongle
 - 4225 - Open EasyQRCode for PAR dongle
 - 4275 - Open EasyQRCode for soft-based licensing
 - 4325 - Open eVision EasyQRCode
-

Optional accessories

- 6512 - eVision/Open eVision USB Dongle (empty)
 - 6513 - eVision/Open eVision Parallel Dongle (empty)
 - 6514 - Neo USB Dongle (empty)
-



EMEA

Euresys SA

Liège Science Park - Rue du Bois Saint-Jean, 20
4102 Seraing - Belgium

Phone: +32 4 367 72 88
Email: sales.europe@euresys.com

EMEA

Sensor to Image GmbH

Lechtorstrasse 20 -
86956 Schongau - Germany

Phone: +49 8861 2369 0
Email: sales.europe@euresys.com

AMERICA

Euresys Inc.

27132-A Paseo Espada - Suite 421
San Juan Capistrano, CA 92675 - United States

Phone: +1 949 743 0612
Email: sales.americas@euresys.com

ASIA

Euresys Pte. Ltd.

750A Chai Chee Road - #07-15 ESR BizPark @ Chai Chee
Singapore 469001 - Singapore

Phone: +65 6445 4800
Email: sales.asia@euresys.com

CHINA

Euresys Shanghai Liaison Office

Unit 802, Tower B, Greenland The Center - No.500 Yunjin Road, Xuhui District
200232 Shanghai - China

Euresys 上海联络处

上海市徐汇区云锦路500号绿地汇中心B座802室
200232

Phone: +86 21 33686220
Email: sales.china@euresys.com

CHINA

Euresys Shenzhen Liaison Office

Room 1202 - Chinese Overseas Scholars Venture Building
518057 Shenzhen - China

Euresys 深圳联络处

深圳南山区留学生创业大厦1期1202
518057

Phone: +86 755 86506902
Email: sales.china@euresys.com

JAPAN

Euresys Japan K.K.

Expert Office Shinyokohama - Nisso Dai 18 Building, Shinyokohama 3-7-18, Kohoku
Yokohama 222-0033 - Japan

〒222-0033

神奈川県横浜市港北区新横浜3-7-18 日総第18ビル エキスパートオフィス新横浜

Phone: +81 45 594 7259

Email: sales.japan@euresys.com

More at www.euresys.com

