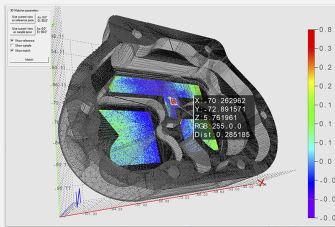


Easy3DMatch

3D alignment and inspection library



At a Glance

- Align a scanned 3D object with another scan or with a reference mesh
- Compute the local distances between 3D scans and a golden sample or reference mesh
- Detect anomalies such as misplaced features, geometric distortions, gaps, bumps,...
- Compatible with all 3D sensors that produce point clouds, depth maps or height maps

Benefits

Easy3DMatch Description

The Easy3DMatch library features alignment functions to find the exact pose (position and orientation) of acquired 3D objects using a reference model. This model can be specified as a reference point cloud or as a 3D mesh from CAD software. Easy3D is required when using any Open eVision's 3D library and is provided when purchasing Easy3DLaserLine, Easy3DObject, Easy3DMatch or the 3D Bundle.

Anomaly detection by the comparison of 3D data against a reference model

After the alignment of the 3D data with the reference model, Easy3DMatch can search for local discrepancies, like holes, bumps, scratches, gaps... The list of detected anomalies is returned along with their individual position, distance and area. New point clouds with distances and colored data can be generated and displayed by the interactive Open eVision 3D viewer.

Support 2D and 3D subdomains of interest

Arbitrary 2D regions (on ZMaps) and 3D volumes (on point clouds) can be used to define subdomains of interest. In this case, the whole object is used during the alignment process, but only some parts are taken into account for comparison and anomaly detection.

Compatibility with 3D sensors

Easy3DMatch can use 3D data coming from a variety of 3D acquisition techniques like laser triangulation, structured light, stereo vision or time of flight. Open eVision's compatibility has been tested with several 3D sensor brands: Automation Technology, Azure Kinect, Benano, IDS Ensenso, Intel Realsense, Lucid Helios, LMI Gocator, Photoneo PhoXi, Shenzhen SinceVision (SSZN), Zivid and others. Point Clouds and ZMaps are managed efficiently and allow 3D processing and analysis to be performed.

3D Viewer

Use the 3D Viewer class of Easy3D to create an interactive 3D display. The 3D Viewer can display point clouds and 3D objects. It uses the OpenGL interface and requires a compatible display device.

Point cloud merger

Point cloud merger is a functionality enabling the fusion of point clouds of the same object's different faces. You can use a number of 3D sensors placed at multiple positions to acquire a complete object at once. The process is split between a calibration phase and a merging phase. As a result, the merger is fast and the calibration is independent of the objects you wish to acquire. Finally, this procedure produces optimized point clouds where duplicate points have been removed and all attributes (colors, normals,...) of the merged clouds are preserved.

Neo Licensing System

- Neo is the new Licensing System of Euresys. It is reliable, state-of-the-art, and is now available to store Open eVision and eGrabber licenses.
- Neo allows you to choose where to activate your licenses, either on a Neo Dongle or in a Neo Software Container. You buy a license, you decide later.
- Neo Dongles offer a sturdy hardware and provide the flexibility to be transferred from a computer to another.
- Neo Software Containers do not need any dedicated hardware, and instead are linked to the computer on which they have been activated.
- Neo ships with its own, dedicated, Neo License Manager, which comes in two flavours: an intuitive, easy to use, Graphical User Interface and a Command Line Interface that allows for easy automation of Neo licensing procedures.

All Open eVision libraries are available for Windows and Linux

- Windows 7 to Windows 10, x86 (32 bits) and x86-64 (64 bits)
- Linux x86-64 (64 bits) with a glibc version 2.18 or newer

Developed with the support of the DG06 Technology Development Department

Applications

Machine Vision for the Electronic Manufacturing Industry

- PCB inspection
- LED inspection
- Connector inspection

Machine Vision for the General Manufacturing Industries

- Checking dimensional accuracy
- Assembly inspection
- Object positioning for pick and place machines

Machine Vision for the Food Inspection Industry

- Food inspection and sorting

Specifications

Software

Host PC Operating System

- Open eVision is a set of 32-bit and 64-bit libraries that require a processor compatible with the SSE4 instruction set.
- The Deep Learning Bundle is only available in the 64-bit Open eVision library.
- Open eVision can be used on the following operating systems:
 - Windows 10 (32- and 64-bits)
 - Windows 8 (32- and 64-bits)
 - Windows 7 (32- and 64-bits)
 - Linux 64 bits (x86-64 only) with a glibc version greater or equal to 2.18
- Since Open eVision 2.6, discontinued support of:
 - Windows Vista 32-bits Service Pack 1
 - Windows XP 32-bits Service Pack 3
 - Windows Embedded Standard 2009 32-bits
- Remote connections
 - Remote connections are allowed using remote desktop, TeamViewer or any other similar software.
- Virtual machines
 - Linux virtual machines are supported. Microsoft Hyper-V and Oracle VirtualBox hypervisors have been successfully tested.
 - Windows virtual machines are not supported.
- Minimum requirements:
 - RAM: 8 GB
 - Display size: 800 x 600. 1280 x 1024 recommended.
 - Color depth: 16 bits. 32 bits recommended.
 - Between 100 MB and 2 GB free hard disk space for libraries, depending on selected options.

APIs

- Supported Integrated Development Environments and Programming Languages:
 - Microsoft Visual Studio 2008 SP1 (C++, C#, VB .NET, C++/CLI)
 - Microsoft Visual Studio 2010 (C++, C#, VB .NET, C++/CLI)
 - Microsoft Visual Studio 2012 (C++, C#, VB .NET, C++/CLI)
 - Microsoft Visual Studio 2013 (C++, C#, VB .NET, C++/CLI)
 - Microsoft Visual Studio 2015 (C++, C#, VB .NET, C++/CLI)
 - Microsoft Visual Studio 2017 (C++, C#, VB .NET, C++/CLI)
 - Microsoft Visual Studio 2019 (C++, C#, VB .NET, C++/CLI)
 - QtCreator 4.15 with Qt 5.12
 - Since Open eVision 2.5.1, discontinued support of:
 - Borland C++ Builder 6.0 update 4 (C++)
 - CodeGear Delphi 2009 (Object Pascal)
 - CodeGear C++ Builder 2009 (C++)
 - Microsoft Visual Studio 6.0 SP6 (C++, Basic)
 - ActiveX API
 - Since Open eVision 2.4.1, discontinued support of:
 - Embarcadero RAD Studio XE4 and XE5 (C++, Object Pascal, 32 bits only)
-

Ordering Information

Product code - Description

- 4184 - Open Easy3DMatch for USB dongle
 - 4234 - Open Easy3DMatch for PAR dongle
 - 4284 - Open Easy3DMatch for soft-based licensing
 - 4334 - Open eVision Easy3DMatch
-

Optional accessories

- 6512 - eVision/Open eVision USB Dongle (empty)
 - 6513 - eVision/Open eVision Parallel Dongle (empty)
 - 6514 - Neo USB Dongle (empty)
-



EMEA

Euresys SA

Liège Science Park - Rue du Bois Saint-Jean, 20
4102 Seraing - Belgium

Phone: +32 4 367 72 88

Email: sales.europe@euresys.com

EMEA

Sensor to Image GmbH

Lechtorstrasse 20 -
86956 Schongau - Germany

Phone: +49 8861 2369 0

Email: sales.europe@euresys.com

AMERICA

Euresys Inc.

27132-A Paseo Espada - Suite 421
San Juan Capistrano, CA 92675 - United States

Phone: +1 949 743 0612

Email: sales.americas@euresys.com

ASIA

Euresys Pte. Ltd.

750A Chai Chee Road - #07-15 ESR BizPark @ Chai Chee
Singapore 469001 - Singapore

Phone: +65 6445 4800

Email: sales.asia@euresys.com

CHINA

Euresys Shanghai Liaison Office

Unit 802, Tower B, Greenland The Center - No.500 Yunjin Road, Xuhui District
200232 Shanghai - China

Euresys 上海联络处

上海市徐汇区云锦路500号绿地汇中心B座802室
200232

Phone: +86 21 33686220

Email: sales.china@euresys.com

CHINA

Euresys Shenzhen Liaison Office

Room 1202 - Chinese Overseas Scholars Venture Building
518057 Shenzhen - China

Euresys 深圳联络处

深圳南山区留学生创业大厦1期1202
518057

Phone: +86 755 86506902

Email: sales.china@euresys.com

JAPAN

Euresys Japan K.K.

Expert Office Shinyokohama - Nisso Dai 18 Building, Shinyokohama 3-7-18, Kohoku
Yokohama 222-0033 - Japan

〒222-0033

神奈川県横浜市港北区新横浜3-7-18 日総第18ビル エキスパートオフィス新横浜

Phone: +81 45 594 7259

Email: sales.japan@euresys.com

More at www.euresys.com

