

TG2010FCS-HSP

2.0mm F1.0 Aspherical lens

for 1/3" format cameras

CS-Mount

with Focus, w/o Amplifier

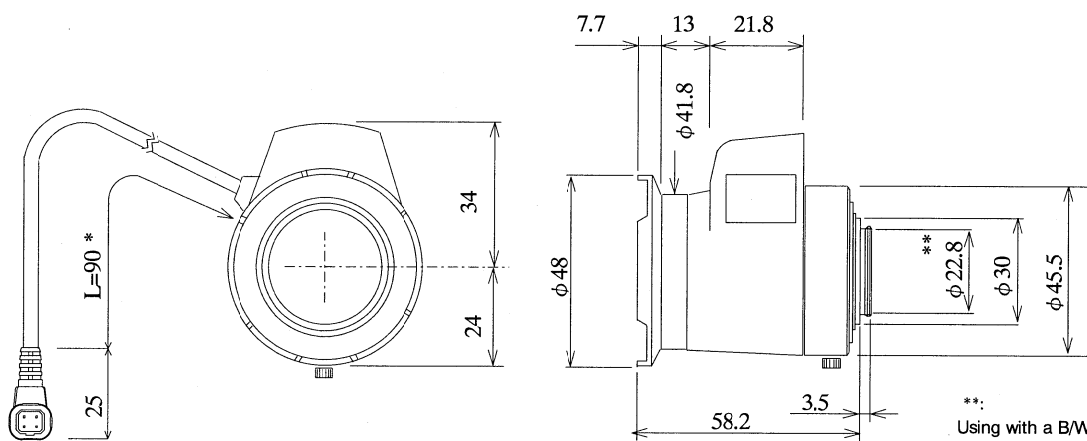
Model No.	TG2010FCS-HSP	Effective	Front	φ28.5 mm
Focal Length	2.0 mm	Lens Aperture	Rear	φ13.7 mm
Max. Aperture Ratio	1:1.0	Back Focal Length		8.5 mm
Max. Image Format	4.8×3.6 mm (φ6 mm)	Flange Back Length		12.5 mm
Operation	Iris	F1.0~360	Mount	CS-Mount
		(by galvano control)	Filter Size	-
	Focus	Manual,[0.1m~Inf.]	Dimensions	φ48.0 × 58.0 × 58.2 mm
Object Dimension at M.O.D.	36.5 x 22.1 cm	Weight		148 g
Angle of View	D	144.9°		
	H	122.6°		
	V	95.7°		
Coil	Drive	190 ohm		
	Control	1000 ohm		
Operating Temperature	-20° C ~ +50° C			

1/3

CS

M.O.D. : Minimum Object Distance

Dimensions

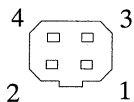


* : 310 mm cable is available

**:
Using with a B/W camera,
please use the attached
"B/W aberration compen-
sation Filter" and
"FB compensation Spacer".
The filter (M22 p=0.5mm)
should be screwed onto
the lens from rear side
and the spacer should be
placed between lens and
camera.

AG

Wiring Diagram



Pin No.

1	Brown	Control (-)
2	Red	Control (+)
3	Yellow	Drive (+)
4	Orange	Drive (-)