

## HG3808AFCS-HSP

3.8mm F0.8 Aspherical lens

for 1/2" format camera

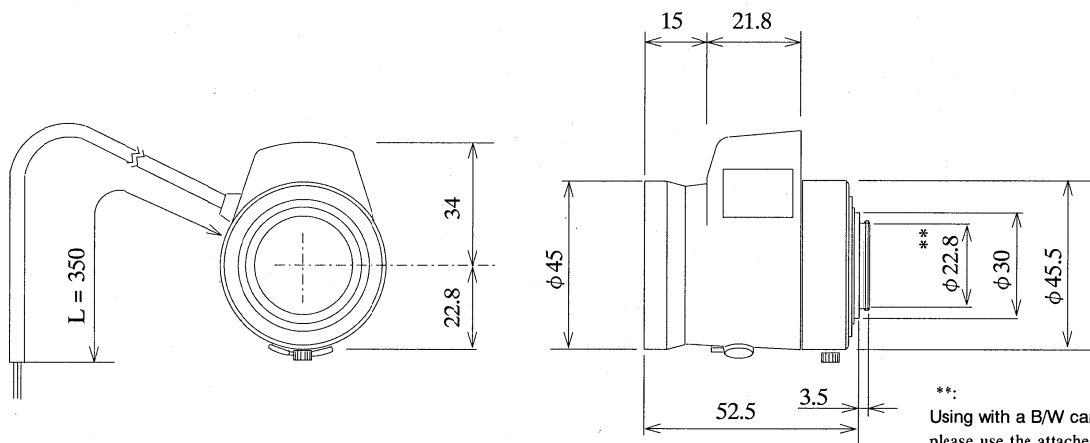
CS-Mount

with Focus & Amplifier

<b>Model No.</b>	HG3808AFCS-HSP	<b>Effective</b>	<b>Front</b>	φ 27.2 mm
<b>Focal Length</b>	3.8 mm	<b>Lens Aperture</b>	<b>Rear</b>	φ 16.6 mm
<b>Max. Aperture Ratio</b>	1:0.8	<b>Back Focal Length</b>		9.07 mm
<b>Max. Image Format</b>	6.4×4.8 mm (φ 8 mm)	<b>Flange Back Length</b>		12.5 mm
<b>Operation</b>	<b>Iris</b>	F0.8~360 (by galvano control)	<b>Mount</b>	CS-Mount
	<b>Focus</b>	Manual,[0.15m~Inf.]	<b>Filter Size</b>	M43 P=0.75mm
<b>Object Dimension at M.O.D.</b>	29.6×20.5 cm	<b>Dimensions</b>		φ 45.0×56.8×52.5 mm
<b>Angle of View</b>	<b>D</b>	107.7°	1/3"	84.3°
	<b>H</b>	89.2°		68.6°
	<b>V</b>	68.6°		52.1°
<b>Supply Voltage</b>	DC 8~16 V			
<b>Current</b>	Less than 35 mA			
<b>Transit Time</b>	Approx. 2 sec.			
<b>Light Weighting Method</b>	Adjustable between Average - Peak ( to be set at Average at factory )			
<b>Input Signal</b>	Video Signal ( V or VS )			
<b>Iris Accuracy</b>	± 15% at Video Signal Level			
<b>Sensitivity Adjustment</b>	0.5~1.0Vp-p ( Video Signal )			
<b>Input Impedance</b>	High Impedance			
<b>Operating Temperature</b>	-20° C~+50° C			

M.O.D. : Minimum Object Distance

### Dimensions



### Wiring Diagram

