

HG2610AFCS-HSP

2.6mm F1.0 Aspherical lens

for 1/2" format camera

CS-Mount

with Focus & Amplifier

Model No.	HG2610AFCS-HSP		Effective	Front	φ30.0 mm
Focal Length	2.6 mm		Lens Aperture	Rear	φ13.7 mm
Max. Aperture Ratio	1:1.0		Back Focal Length	8.5 mm	
Max. Image Format	6.4×4.8 mm (φ8 mm)		Flange Back Length	12.5 mm	
Operation	Iris	F1.0~360	Mount	CS-Mount	
	(by galvano control)		Filter Size	-	
	Focus	Manual,[0.1m~Inf.]	Dimensions	φ54.0×61.0×55.0 mm	
Object Dimension at M.O.D.	36.7×22.6 cm		Weight	146 g	
Angle of View	D	143.5°	1/3"	116.8°	
	H	122.8°		97.1°	
	V	97.1°		75.0°	
Supply Voltage	DC 8~16 V				
Current	Less than 35 mA				
Transit Time	Approx. 2 sec.				
Light Weighting Method	Adjustable between Average - Peak (to be set at Average at factory)				
Input Signal	Video Signal (V or VS)				
Iris Accuracy	± 15% at Video Signal Level				
Sensitivity Adjustment	0.5~1.0Vp-p (Video Signal)				
Input Impedance	High Impedance				
Operating Temperature	-20° C~+50° C				

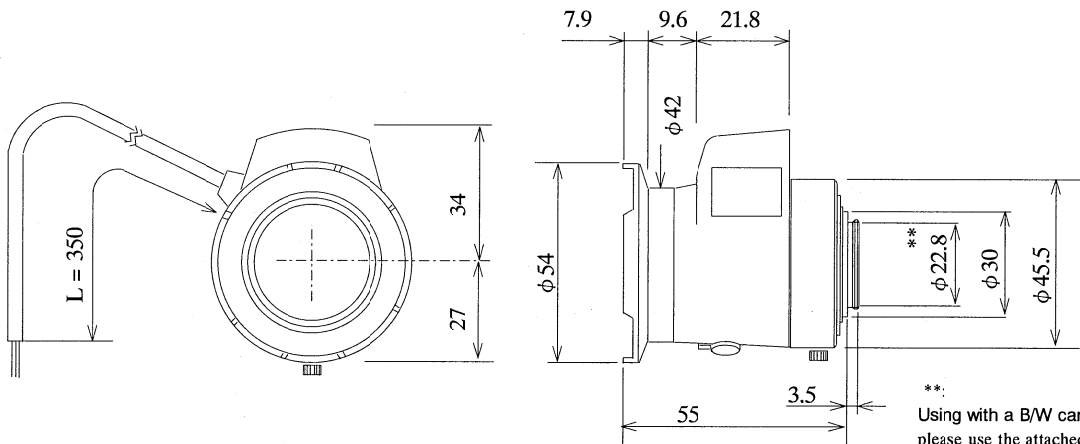
1/2

CS

AG

M.O.D. : Minimum Object Distance

Dimensions



**.
Using with a B/W camera,
please use the attached
"B/W aberration compen-
sation Filter" and
"FB compensation Spacer".
The filter (M22 p=0.5mm)
should be screwed onto
the lens from rear side
and the spacer should be
placed between lens and
camera.

Wiring Diagram

