

HG1208AFCS-HSP

12mm F0.8 Aspherical lens

for 1/2" format camera

CS-Mount

with Focus & Amplifier

Model No.	HG1208AFCS-HSP		Effective	Front	φ27.8 mm
Focal Length	12 mm		Lens Aperture	Rear	φ16.4 mm
Max. Aperture Ratio	1:0.8		Back Focal Length		9.3 mm
Max. Image Format	6.4×4.8 mm (φ8 mm)		Flange Back Length		12.5 mm
Operation	Iris	F0.8~360	Mount		CS-Mount
		(by galvano control)	Filter Size		M40.5 P=0.5mm
	Focus	Manual,[0.45m~Inf.]	Dimensions		φ42.0×56.8×54.5 mm
Object Dimension at M.O.D.	25.1×18.8 cm		Weight		146g
Angle of View	D	38.6°	1/3"		29.3°
	H	31.2°			23.6°
	V	23.6°			17.7°
Supply Voltage	DC 8~16 V				
Current	Less than 35 mA				
Transit Time	Approx. 2 sec.				
Light Weighting Method	Adjustable between Average - Peak (to be set at Average at factory)				
Input Signal	Video Signal (V or VS)				
Iris Accuracy	± 15% at Video Signal Level				
Sensitivity Adjustment	0.5~1.0Vp-p (Video Signal)				
Input Impedance	High Impedance				
Operating Temperature	-20° C~+50° C				

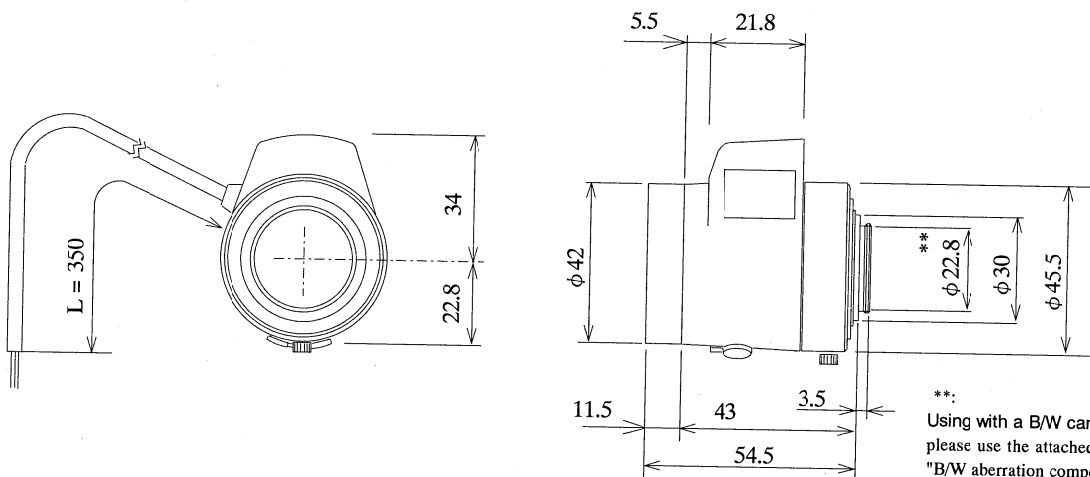
1/2

CS

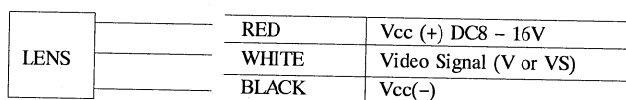
AG

M.O.D. : Minimum Object Distance

Dimensions



Wiring Diagram



**:
Using with a B/W camera,
please use the attached
"B/W aberration compen-
sation Filter" and
"FB compensation Spacer".
The filter (M22 p=0.5mm)
should be screwed onto
the lens from rear side
and the spacer should be
placed between lens and
camera.