

HG0808AFCS-HSP

8mm F0.8 Aspherical lens
for 1/2" format camera
CS-Mount

with Focus & Amplifier

Model No.	HG0808AFCS-HSP		Effective	Front	φ 28.0 mm
Focal Length	8 mm		Lens Aperture	Rear	φ 13.3 mm
Max. Aperture Ratio	1:0.8		Back Focal Length 9.6 mm		
Max. Image Format	6.4×4.8 mm (φ 8 mm)		Flange Back Length 12.5 mm		
Operation	Iris	F0.8~360	Mount CS-Mount		
	Focus	(by galvano control) Manual, [0.3m~Inf.]	Filter Size M40.5 P=0.5mm		
Object Dimension at M.O.D.	24.8×18.3 cm		Dimensions φ 42.0×56.8×43.0 mm		
Angle of View	D	55.1°	1/3"		42.2°
	H	44.9°			34.0°
	V	34.0°			25.6°
Supply Voltage	DC 8~16 V				
Current	Less than 35 mA				
Transit Time	Approx. 2 sec.				
Light Weighting Method	Adjustable between Average - Peak (to be set at Average at factory)				
Input Signal	Video Signal (V or VS)				
Iris Accuracy	± 15% at Video Signal Level				
Sensitivity Adjustment	0.5~1.0Vp-p (Video Signal)				
Input Impedance	High Impedance				
Operating Temperature	-20° C~+50° C				

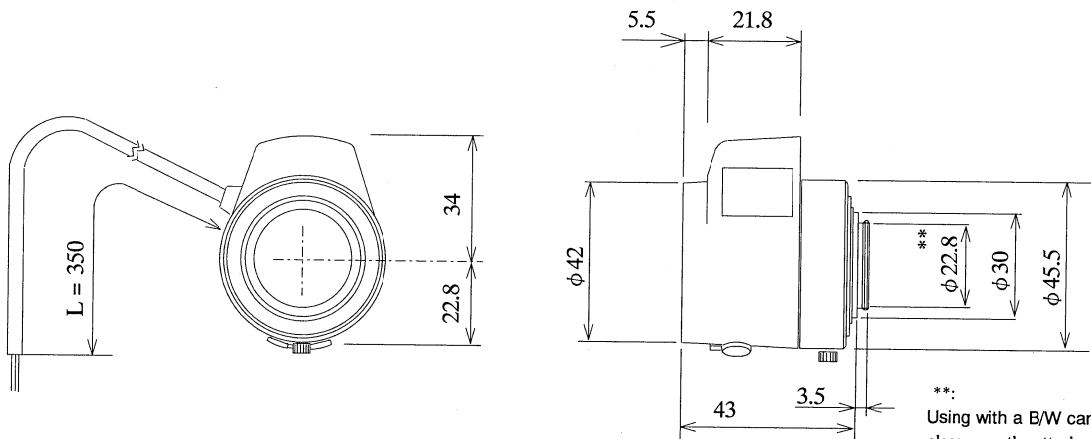
1/2

CS

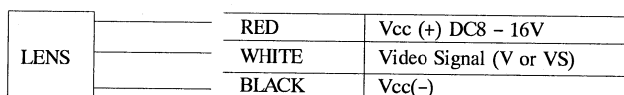
AG

M.O.D. : Minimum Object Distance

Dimensions



Wiring Diagram



**:
Using with a B/W camera,
please use the attached
"B/W aberration compensa-
tion Filter" and
"FB compensation Spacer".
The filter (M22 p=0.5mm)
should be screwed onto
the lens from rear side
and the spacer should be
placed between lens and
camera.