

HG0608AFCS-HSP

6mm F0.8 Aspherical lens
for 1/2" format camera
CS-Mount

with Focus & Amplifier

Model No.	HG0608AFCS-HSP		Effective	Front	φ 23.0 mm
Focal Length	6 mm		Lens Aperture	Rear	φ 16.1 mm
Max. Aperture Ratio	1:0.8		Back Focal Length	9.11 mm	
Max. Image Format	6.4×4.8 mm (φ 8 mm)		Flange Back Length	12.5 mm	
Operation	Iris	F0.8~360	Mount	CS-Mount	
	(by galvano control)		Filter Size	M40.5 P=0.5mm	
	Focus	Manual,[0.25m~Inf.]	Dimensions	φ 42.0×56.8×48.5 mm	
Object Dimension at M.O.D.	27.0×19.9 cm		Weight	150 g	
Angle of View	D	68.5°	1/3"	53.5°	
	H	56.7°		43.4°	
	V	43.4°		32.9°	
Supply Voltage	DC 8~16 V				
Current	Less than 35 mA				
Transit Time	Approx. 2 sec.				
Light Weighting Method	Adjustable between Average - Peak (to be set at Average at factory)				
Input Signal	Video Signal (V or VS)				
Iris Accuracy	± 15% at Video Signal Level				
Sensitivity Adjustment	0.5~1.0Vp-p (Video Signal)				
Input Impedance	High Impedance				
Operating Temperature	-20° C~+50° C				

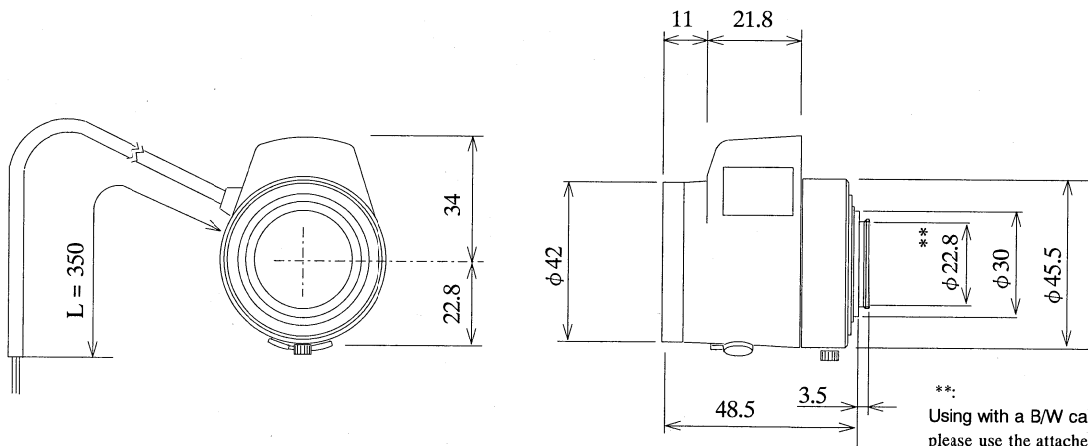
1/2

CS

AG

M.O.D. : Minimum Object Distance

Dimensions



**:
Using with a B/W camera,
please use the attached
"B/W aberration compen-
sation Filter" and
"FB compensation Spacer".
The filter (M22 p=0.5mm)
should be screwed onto
the lens from rear side
and the spacer should be
placed between lens and
camera.

Wiring Diagram

