

For Security

# 1" ZOOM

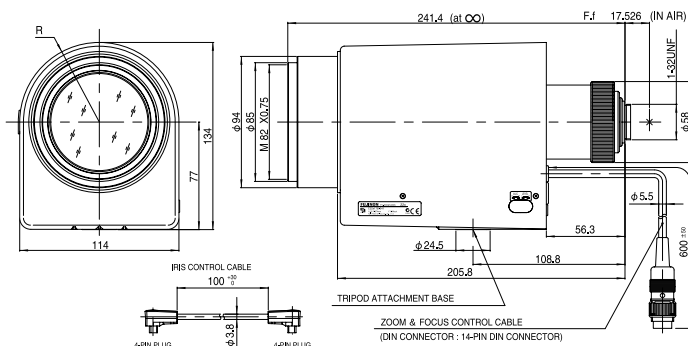
Motor Drive Zoom  
Preset  
Auto Iris  
DC Type

**FUJINON** CCTV LENS

C22×17B-Y41

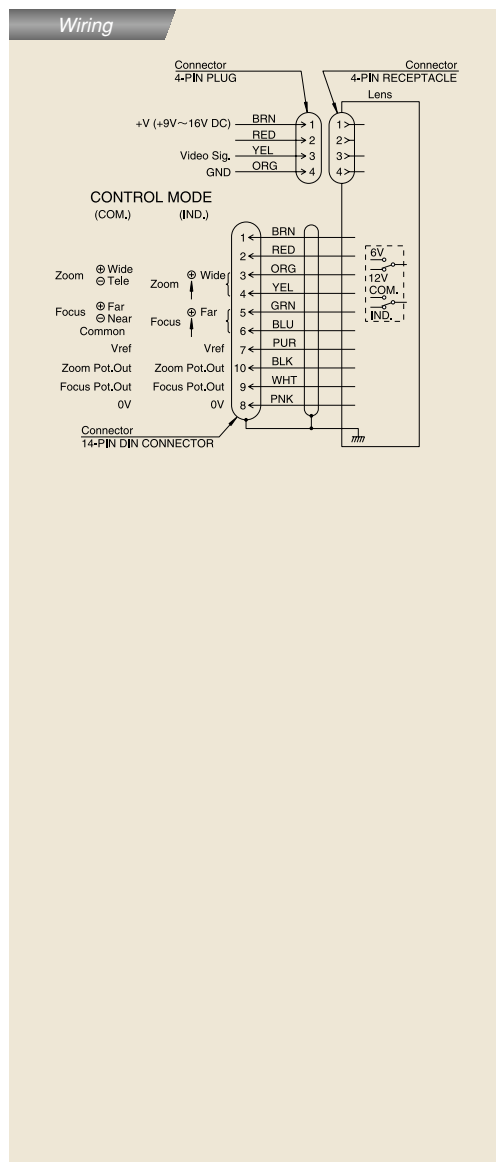


※A photograph is a similar model.



Unit : mm

Model		C22 × 17B-Y41	
Focal Length		17mm ~ 374mm (22×)	
Iris Range		F2.3 ~ T3000 (Equivalent to F3000)	
Operation	Iris	Auto	
	Focus	Motor Drive	
	Zoom	Motor Drive	
ANGLE OF VIEW (H × V)	1/2"	Wide	41°16' × 31°32'
		Tele	1°58' × 1°28'
Focusing Range (From Front Of Lens)		∞ ~ 3m	
Object Dimensions at M.O.D. (H × V)	1/2"	Wide	2,178mm × 1,633mm
		Tele	99mm × 74mm
Back Focal Distance (in air)		67.38mm	
Filter Thread		M82 × 0.75mm	
Mount		C Mount	
Mass		2.5kg	
Exit Pupil Position (from Image Plane)		-127mm	
Standard Accessories		Iris Control Cable	



## Accessories

Extender	Model	Magnification
	HE15-1	×1.5
	HE20-1	×2