

For Security

1" ZOOM

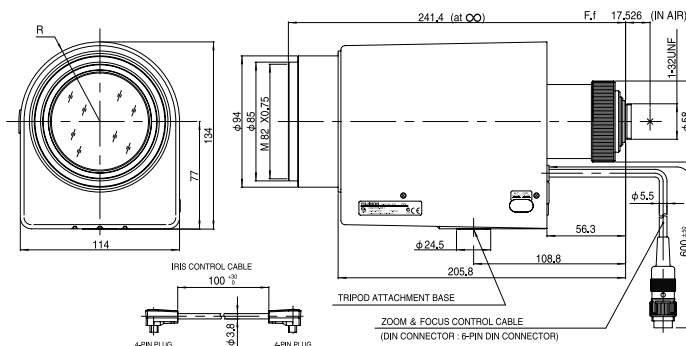
Motor Drive Zoom
Auto Iris
VIDEO TYPE

FUJINON CCTV LENS

C22×17B-S41



※A photograph is a similar model.



Unit : mm

Model		C22 × 17B-S41	
Focal Length		17mm ~ 374mm (22×)	
Iris Range		F2.3 ~ T3000 (Equivalent to F3000)	
Operation	Iris	Auto (*1)	
	Focus	Motor Drive	
	Zoom	Motor Drive	
ANGLE OF VIEW (H × V)	1/2"	Wide	41°16' × 31°32'
		Tele	1°58' × 1°28'
Focusing Range (From Front Of Lens)		∞ ~ 3m	
Object Dimensions at M.O.D. (H × V)	1/2"	Wide	2,178mm × 1,633mm
		Tele	99mm × 74mm
Back Focal Distance (in air)		67.38mm	
Filter Thread		M82 × 0.75mm	
Mount		C Mount	
Mass		2.5kg	
Exit Pupil Position (from Image Plane)		-127mm	
Standard Accessories		Iris Control Cable Conversion Cable (6-pin→4-pin) Connection Connector (4-pin) Connection Connector (6-pin)	

Wiring

コントローラ出力	6V	±6V	12V	±12V
選択スイッチセット位置	6V/IND.	6V/COM.	12V/IND.	12V/COM.
変換ケーブル	不要	要	不要	要

工場出荷時は、左図のように12V/INDに設定してあります。

例、±6Vコントロールの場合(変換ケーブルの接続が必要)

Accessories

Extender	Model		Magnification	
		HE15-1		×1.5
	HE20-1		×2	

Control Box	Model	Output Voltage	Operation	Maximum Output Current	Output Connector	Power Source	Power Consumption (at 100V AC)	Mass
	CRD-1A	6V DC/12V DC	Zoom, Focus	0.2A	Mab 6100	100V/120V/220V/240V AC, 50/60Hz	15W	2.1kg
	CRD-1B	±6V DC/±12V DC	Zoom, Focus	0.2A	Mab 4100	100V/120V/220V/240V AC, 50/60Hz	15W	2.1kg

Power Cord	Japan		U.S.A./Canada	Continental Europe	Australia	Without AC Plug
		PCA-1	PCA-2	PCA-3	PCA-4	PCA-5

Extension Cable	10m	CRD-1A		CRD-1B	CEC-AB102-11	
	20m		CEC-AA102-11		CEC-AA202-11	