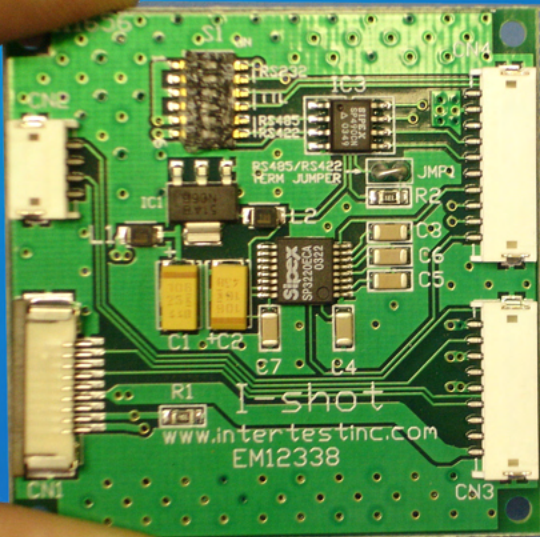


iShot

FCB-RS Interface Board

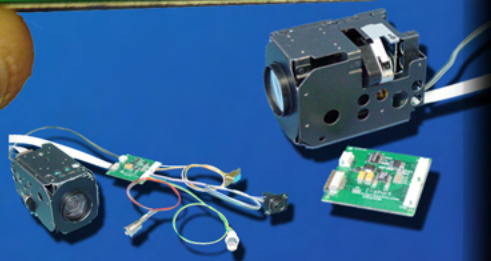


The FCB-RS interface board connects quickly and simply to any of the Sony FCB Series block cameras to convert the standard ribbon cable to wired output connections. This is ideal for testing and preparing cameras prior to use or installation.

Output high-resolution video from the head simultaneously or independently through the S-Video or Composite connections.

Communicate with the camera head using the included connection using RS-232, RS-485 or TTL protocols.

All powered through the 12V power supply connection included in the wire harness.



Connector and Pin Assignments

CN-1 (9-Pin Power, VBS and V-Lock to Camera)		
Pin Number	Name	Level
1	R x D	CMOS 5V (Low: Max 0.8V) (High: Min 2.0V) Read Data
2	T x D	CMOS 5V (Low: Max 0.1V) (High: Min 4.4V) Send Data
3	GND (For R x D and T x D)	
4	DC In	9.0V +/- 3V
5	GND (For DC In)	
6	VBS Out	1.0V +/- 0.2V
7	GND (For VBS Out)	
8	V LOCK PULSE OUTPUT	External VD-Lock Pulse (EX.FV: Negative, 3V p-p 50% Duty)
9	GND (For V Lock Pulse)	

Supplied Cable: 9-Pin FFC Cable. Length: 11.5-inches (290mm)

CN-2 (4-Pin Y/C to Camera)			
Pin Number	Name	Wire Color	Pin Number
1	Y Out	Gray	1
2	GND (For Y Signal)	Black	2
3	C Out	Gray	3
4	GND (For C Signal)	Black	4

Supplied Cable: 4-Pin harness cables with JST connectors on both ends. Length: 12.6-inches (320mm)

CN-3 (DC, V-Lock and Video Connector)				
Pin Number	Name	Level	Wire Color	Pin Number
1	Power In	6V - 12V	Brown	9
2	GND (Power In)		Red	8
3	V LOCK PULSE INPUT		Orange	7
4	Video Out	Composite Video Signal	Yellow	6
5	GND (For Video)		Green	5
6	Y Out		Blue	4
7	GND (For Y)		Purple	3
8	C-Out		Gray	2
9	GND (For C)		White	1

Supplied Cable: 9-Pin harness cables with JST connectors on both ends. Length: 12.6-inches (320mm)

CN-4 (For Communication Connector)				
Pin Number	Name	Level	Wire Color	Pin Number
1	T x D In	RS-232C Level	Brown	1
2	T x D In A	RS-422/485	Red	2
3	T x D In B	RS-422/485	Orange	3
4	R x D In	RS-232C Level	Yellow	4
5	TD	TTL Level	Green	5
6	R x D In Y	RS-422/485	Blue	6
7	R x D In Z	RS-422/485	Purple	7
8	RD	TTL Level	Gray	8
9	GND		White	9
10	NC		Black	10

Supplied Cable: 9-Pin harness cables with JST connectors on both ends. Length: 12.6-inches (320mm)

S1 Position			
For	"On"	"Off"	Notes
RS-232	1,2	3,4,5,6	
TTL Direct	3,4	1,2,5,6	
RS-422/485	5,6	1,2,3,4	1

Notes: For RS-422/485 the termination jumper (JMP1) maybe removed if multiple cameras are being utilized.