

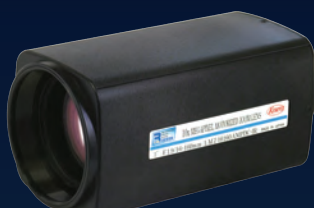


Crystal
Clear
Optics

Megapixel SWIR Zoom Lens Series



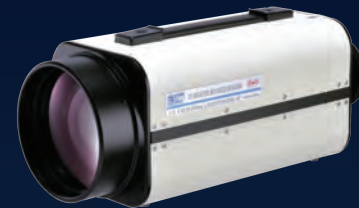
LMZ25300-SW
12x Series
1" 25-300mm / F2.8



LMZ16160-SW
10x Series
1" 16-160mm / F1.9



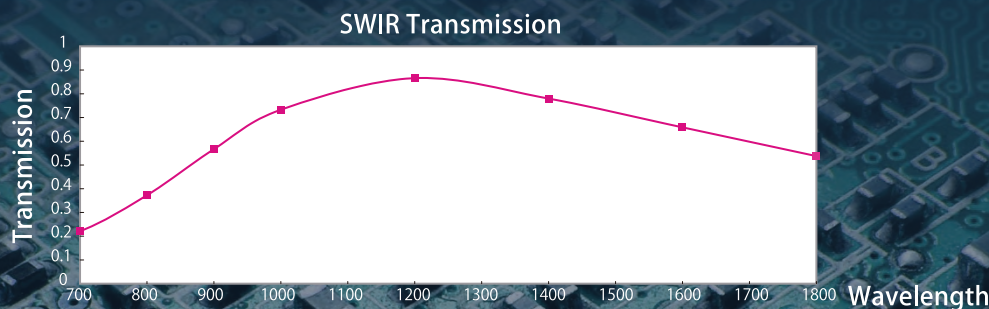
LMZ1177-SW
7x Series
2/3" 11-77mm / F1.6



LMZ20750-SW
37.5x Series
1/1.8" 20-750mm / F4.6

Features of Megapixel SWIR Zoom Lens Series

- Incorporating Kowa's special coating technology to maximize transmission at the 1,000 to 1,800nm range.
- Designed for Near Infrared (NIR) and Short Wavelength Infrared (SWIR) applications.
- Produces ultra-high resolution at mid to long range working distances.
- Featuring Kowa's 3-Cam design to increase durability, reliability, and product life.
- DC auto-iris, 3 motor, and custom options available.



Model	LMZ25300M3P-SW	LMZ16160M3P-SW	LMZ1177M3P-SW	LMZ20750M3P-SW
Focal Length (mm)	25-300	16-160	11-77	20-750
Image Size (mm)	12.8x9.6 (Φ16)	12.8x9.6 (Φ16)	8.8x6.6 (Φ11)	7.2x5.4 (Φ9)
Iris Range (F-stop)	F2.8~F32	F1.9~F22	F1.6~F16	F4.6~F360
Control Iris	Motor	Motor	Motor	Motor
Focus	Motor	Motor	Motor	Motor
Mount	C-mount	C-mount	C-mount	C-mount
Size (mm)	100x100x257	100x100x208	80x80x142	122x122x342
Weight (g)	1,950	1,350	760	3,500
Temperature Range	-10°C~+50°C	-10°C~+50°C	-10°C~+50°C	-10°C~+50°C



Kowa Optimed, Inc.

20001 S. Vermont Ave.
Torrance, CA 90502, USA

Phone: (310) 327-1913
Facsimile: (310) 327-4177

Email: customerservice@kowa.com
URL: <http://www.kowa.usa.com>