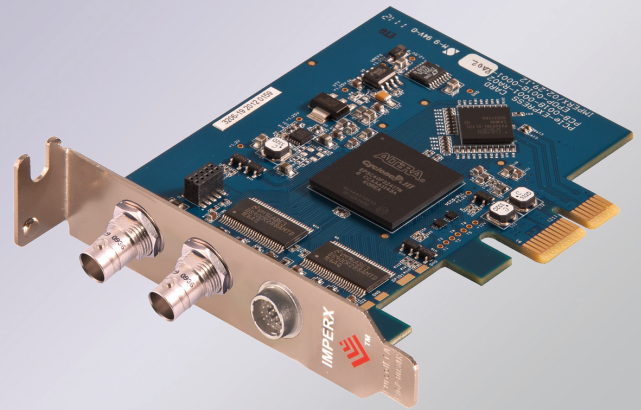




HD-SDI PCIe x1

Video Capture Card



HD-SDI PCIe x1 for Desktop PCs (VCE-HDPCle01)

Acquisition from an SD or HD-SDI video source.

Advanced features: Look up tables, histograms, RGB gain/offset with auto-white balance...

IMPERX HD-SDI PCIe x1 is a professional level PCI Express video capture card that enables users to view and store in real time mega pixel video images from any standard HD-SDI video source onto desktop PC computers. IMPERX HD-SDI PCIe x1 is capable of capturing single or multiple frames and standard AVI clips from any SD or HD-SDI compliant video source. Each captured frame can be stamped with a user message along with the date and time of capture. A full software suite that includes drivers, C/C++, SDK, and an application program is provided with each IMPERX HD-SDI PCIe x1 (VCE-HDPCle01) card.

- Supports SD and HD-SDI formats for 720p, 1080i and 1080p video
- Supports SMPTE 292M serial interface and SMPTE 274M/296M framing
- Supports two audio channels
- A second BNC connector provides an SDI loop-through capability
- Bi-directional RS232/RS485 serial interface for camera control
- Saves 20 bit YCrCb 4:2:2 or 24-bit data
- PCIe x1 compliant providing 2.5 Gbps of bandwidth
- Intelligent scatter/gather DMA for fast, efficient use of PCIe x1 bandwidth and system memory
- Flow-through pipelined architecture for low latency
- Many advanced features including look up tables, histograms, RGB gain/offset with auto-white balance, hex pixel dump, gamma correction, etc.
- On board color space conversion
- Plug-and-Play operation with hot insertion/removal



6421 CONGRESS AVENUE | BOCA RATON | FL 33487 | USA
 1-561-989-0006 | 1-866-849-1662 | F 1-561-989-0045
 WWW.IMPERX.COM | COPYRIGHT 2013 | SALES@IMPERX.COM

CAMERAS &
 FRAME GRABBERS
 MADE IN AMERICA



VCE-HDPCle x1 for Desktop PCs Frame Grabber Specifications

Features

- SD or HD-SDI real time video and audio acquisition with SDI loop-through
- Audio acquisition of two 24 bit channels @ 48KHz
- PCI Express x1 lane providing 2.5 Gbps of bandwidth
- Serial communications interface for camera control
- Intelligent scatter/gather DMA
- Flow-through pipelined architecture
- Dynamic buffer allocation
- Selectable window sizes
- Adjustable RGB brightness and auto white balance
- Programmable RGB lookup tables and gamma correction
- Captures single, multiple frames or AVI clips
- Normal or delay capture
- Date, time and text overlay
- RAW, BMP, TIFF or adjustable JPEG file format
- 16/20 bit YCrCb 4:2:2 or 24-bit RGB formatting
- Image viewer with DVR controls

Software

Application program: Full featured, intuitive, easy to use
 GUI drivers: Win XP/2000/Vista/7/8, DirectX, Halcon, Labview, Matlab, SDK:C/C++,COM, .NET, ActiveX - all with sample source code.

Video Source

Two 75 ohm BNC coaxial connectors (in and out)
 Analog SMPTE 292M serial interface
 operating at 1.485Gbps
 SMPTE 274M and SMPTE 296M framing

Communications

RS232/RS485 ASYNC UART for camera control
 6-pin Hirose style connector

Power

3.3V DC +/-5%, 500 mA steady
 1.65W constant power

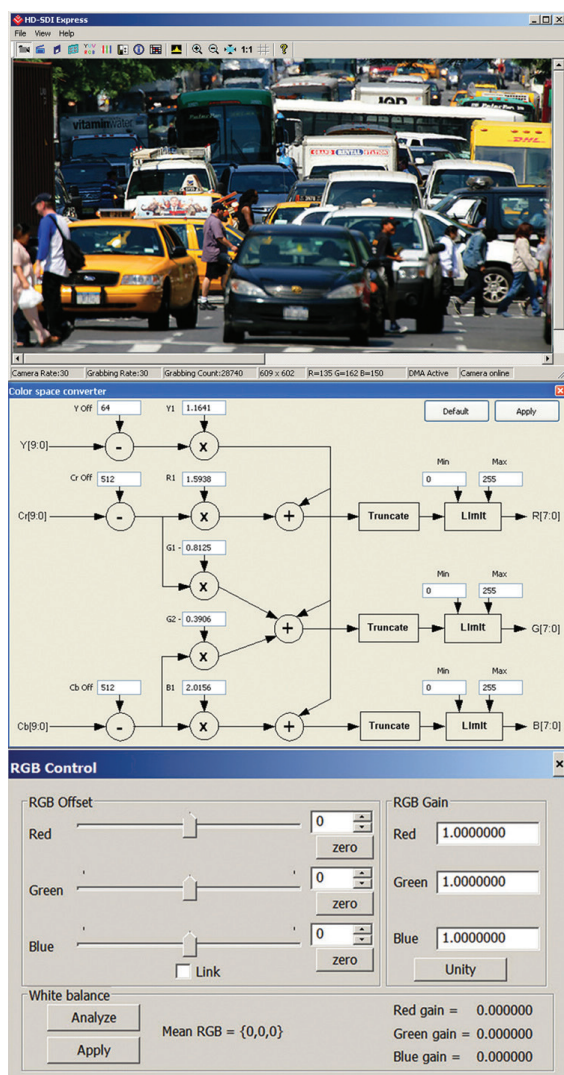
Environmental

Operating temperature: 0°C to 65°C
 Relative humidity: 90% non-condensing

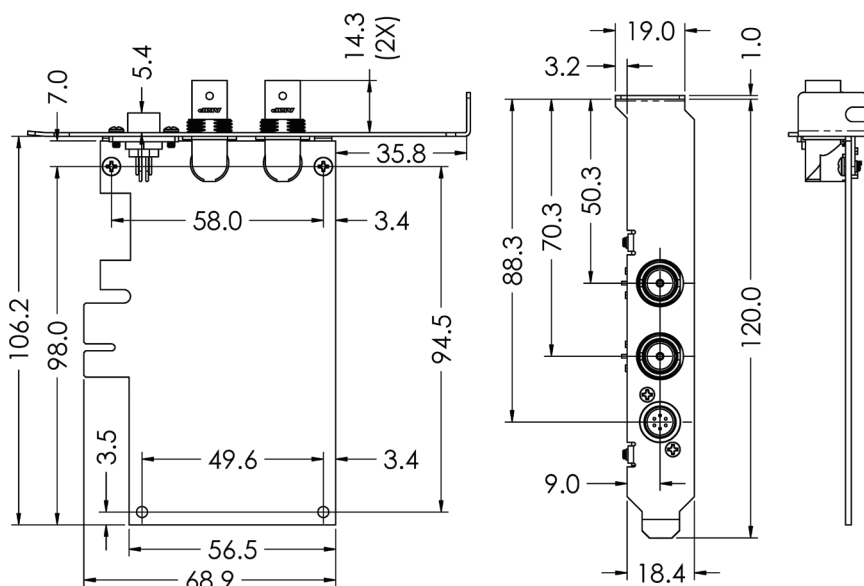
Order: VCE-HDPCle01

For specific details and ordering information, consult the HD-SDI PCIe x1 user's manual or contact IMPERX at sales@imperx.com.

Software



Mechanical Dimensions



ALSO SUPPLIED WITH LOW PROFILE BRACKET

